



C/O CHEE LIEU
 MAJOR PROJECTS ORGANIZATION
 2 INNOVATION WAY (3RD FLOOR)
 POMONA, CA 91768

PRESORTED
 FIRST CLASS
 U.S. POSTAGE PAID
 LOS ANGELES, CA
 PERMIT #59

<<OWNER NAME>>
 <<MAILING ADDRESS>>
 <<MAILING CITY>>, <<State>> <<Zip>>

FOR MORE INFORMATION

Project website:

www.sce.com/westofdevers

TOLL-FREE PROJECT INFORMATION LINE:

(888) 226-9916

Make sure to like us on Facebook and follow us on Twitter to get energy efficiency tips, breaking news and crucial safety information.

www.facebook.com/sce

and our Twitter feed is @SCE

About Southern California Edison

An Edison International (NYSE:EIX) company, Southern California Edison is one of the nation's largest electric utilities, serving a population of nearly 15 million via 5 million customer accounts in a 50,000-square-mile service area within Central, Coastal and Southern California.

To learn more about how SCE is investing in and transforming the electric grid, visit energized.edison.com.

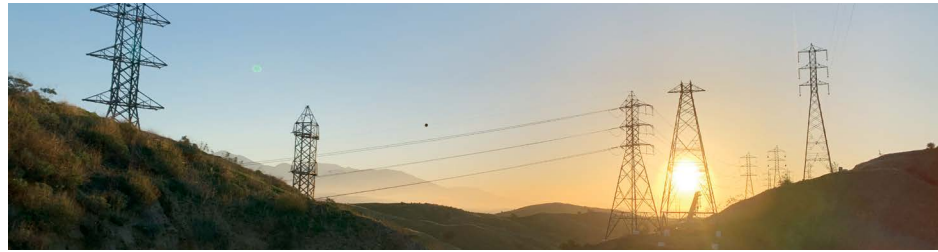


WEST OF DEVERS UPGRADE PROJECT

Expanding Access to
Renewable Energy and
Enhancing Reliability

September 2021





WEST OF DEVERS TRANSMISSION LINES COMPLETED AND IN-SERVICE

In May 2021, the upgrades to SCE’s West of Devers transmission lines were completed and went into service five months before its originally projected timeframe. The project increases the capacity necessary to bring renewable generation — more than 7,000 megawatts (MW) of renewable and battery energy storage resources in the coming years — from desert areas in the eastern part of California to the Southern California region. Completing the West of Devers Project is another giant step in SCE’s ability to delivery clean energy throughout its service area as well as achieving California’s ambitious climate goals. The project will also help with system reliability during peak summer demand.

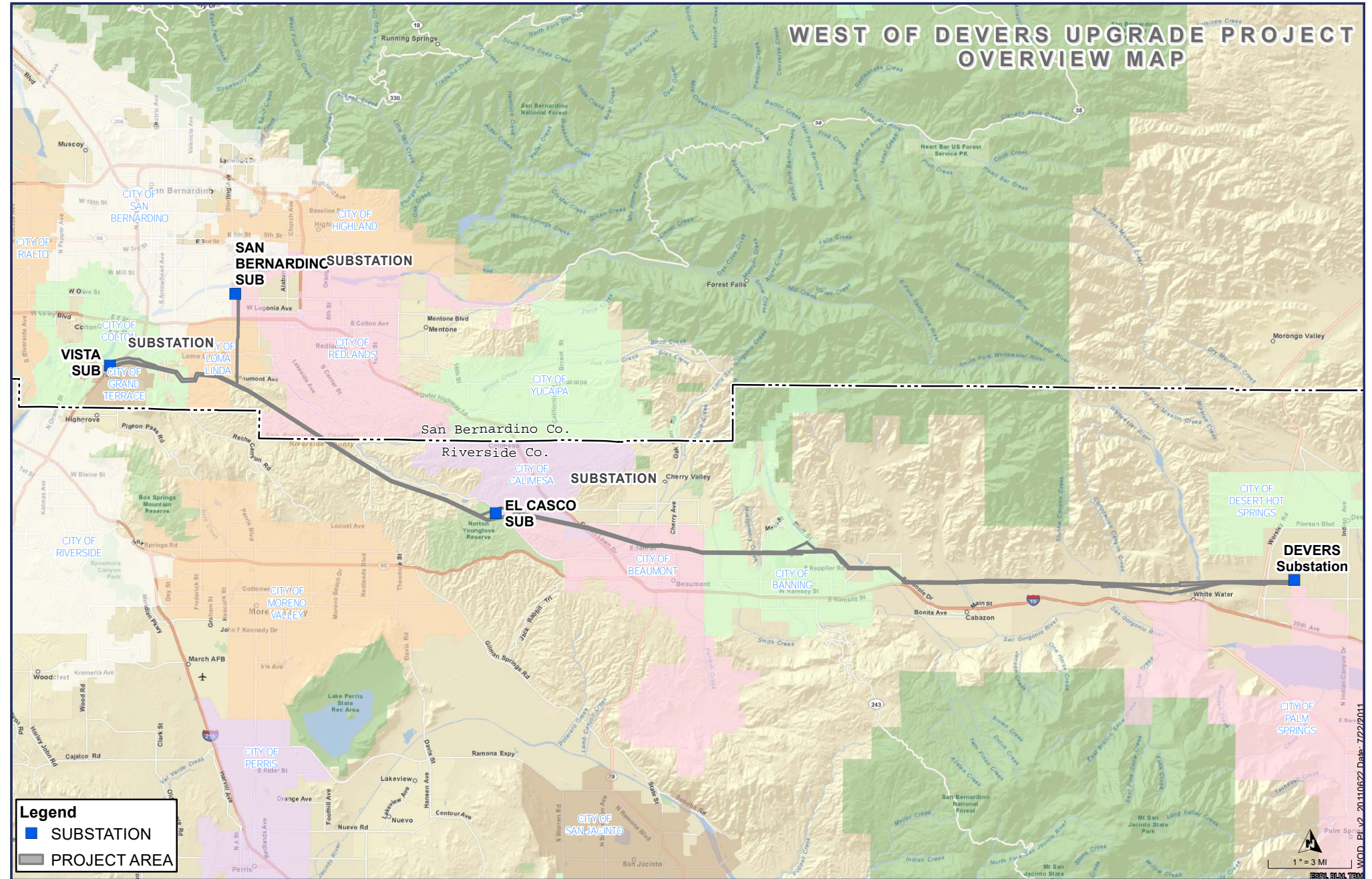
It took many years of planning, siting, public engagement, licensing, and construction to bring the project to fruition. SCE applied in 2013 to request approvals to build the project and received all necessary environmental permits and regulatory approvals to start construction in 2017. Construction on the project began in early 2018. While major construction on the project has been completed, post-construction cleanup and restoration activities will be ongoing.

CONSTRUCTION HIGHLIGHTS

During the last four years, construction consisted of removing and replacing conductors and supporting structures of four separate circuits of 220-kiloVolt transmission lines through the existing 48-mile corridor from the Devers substation near Palm Springs to the Vista and San Bernardino substations in Grand Terrace and San Bernardino, respectively.

- About **200 miles of power lines** installed
- Over **1,300 construction crew personnel** were involved with the project
- Over **1.6 million man-hours** completed
- Over **20 million pounds of steel** were used to construct the towers and poles
- Over **1,700 of helicopter flight hours** to assist with construction

The dedication of all the project team members and the multitude of stakeholders involved contributed to the project’s success and safety.



PROTECTING ENVIRONMENTAL RESOURCES

SCE built the project in an environmentally beneficial way by rebuilding within a corridor containing existing transmission lines, despite the unique operational challenges of this approach. SCE worked closely with federal, state, and local partners to mitigate potential environmental impacts from the project. SCE implemented conservation and design features to avoid or minimize disturbance to sensitive biological resources such as desert tortoise and red-tailed hawks. To protect cultural resource sites, SCE used extensive inventory, monitoring, site evaluation, and awareness programs as well as consulting with Native American tribes and developing long-term



plans to protect cultural sites from direct impacts of project operation and maintenance. In addition, SCE used on-site environmental monitors in sensitive areas and required construction workers to undergo environmental training.

THANK YOU TO OUR COMMUNITIES AND PARTNERS

SCE would like to thank the communities throughout Riverside and San Bernardino counties for their partnership and patience during construction, including Banning, Beaumont, Calimesa, Colton, Grand Terrace, Loma Linda, Redlands, and unincorporated areas. The transmission line corridor also passes through the reservation trust land of the Morongo Band of Mission Indians, a key partner with SCE in its bid to obtain environmental permits as well as an investment partner in the project.