

# Project Summary: Circle City Substation and Mira Loma-Jefferson Subtransmission Line

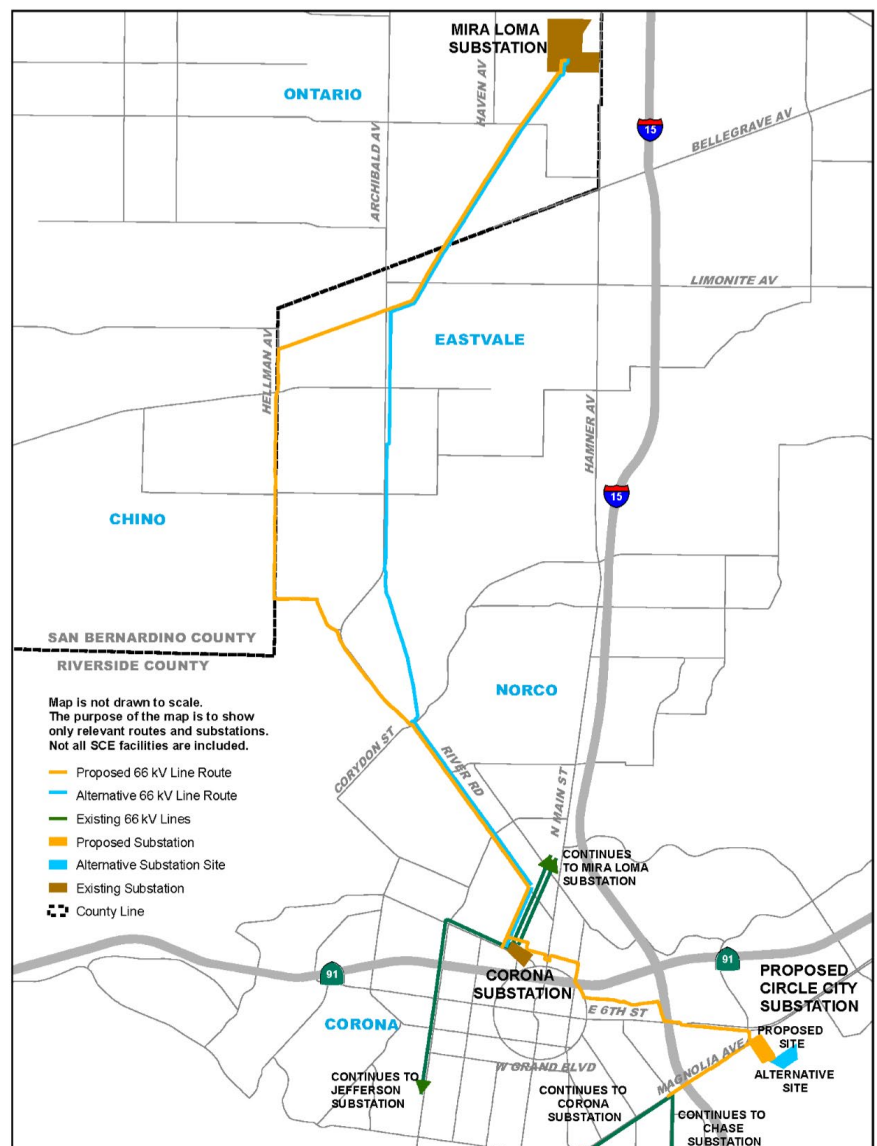
The Circle City Project is Southern California Edison's (SCE) proposal to upgrade the region's electrical infrastructure and improve reliability in the cities of Corona, Eastvale, and Norco. Portions of our existing infrastructure serving the area are near or at their reliable operating limits. Much of the electrical infrastructure that serves our communities was built decades ago, when the typical household's electrical needs were very different. The proposed project addresses growth in the area and increasing electrical usage by our customers. The proposed project is necessary for SCE to continue to safely provide reliable power to our customers.

## What is the Proposed Project?

- Construction of a new 66/12 kilovolt (kV) substation (Circle City Substation) in Corona.
- Construction of 2 new double-circuit 66 kV subtransmission source lines to serve the proposed substation.
- Construction of a new 66 kV subtransmission line (Mira Loma-Jefferson line) starting at the existing Mira Loma Substation to a location adjacent to the existing Corona Substation. Upgrade from single to double circuit in some locations.
- Installation of telecommunications and distribution facilities.

## What is the Timeline?

- 2009-2015: SCE conducted project planning and public outreach activities.
- 4th quarter, 2015: SCE plans to file the project application with the California Public Utilities Commission (CPUC), starting regulatory review process.
- 2015-2017: CPUC Regulatory Review (Please visit project website for more information).
- 2019: Subject to all regulatory approvals, project construction is anticipated to begin.
- 2021: Project expected to be operational and in-service.



## Visual Simulations of the Proposed Project



Existing View from Magnolia Ave near Sherborn St



Visual Simulation of Proposed Project (Source Line Route)



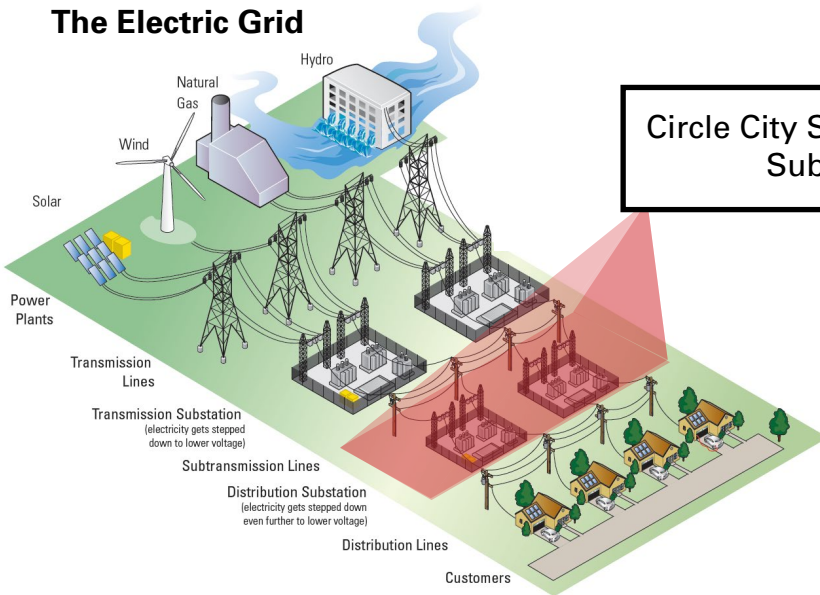
Existing View from River Road Park



Visual Simulation of Proposed Project (Subtransmission Line)

Additional visual simulations are available on our project website

## The Electric Grid



### Circle City Substation & Mira Loma-Jefferson Subtransmission Line Project

This project is part of our subtransmission system. The subtransmission system is an intermediate step between the higher voltage, bulk transmission system and the lower voltage, local distribution system. It is necessary to “step down” the voltage several times before electricity is delivered to individual customers. This project will help bring power to the local distribution system that feeds your individual homes and businesses.

## Where Can I Get More Information?

Call Us: 1-866-464-2005 Option 1 Visit Our Website: [www.sce.com/circlecity](http://www.sce.com/circlecity)