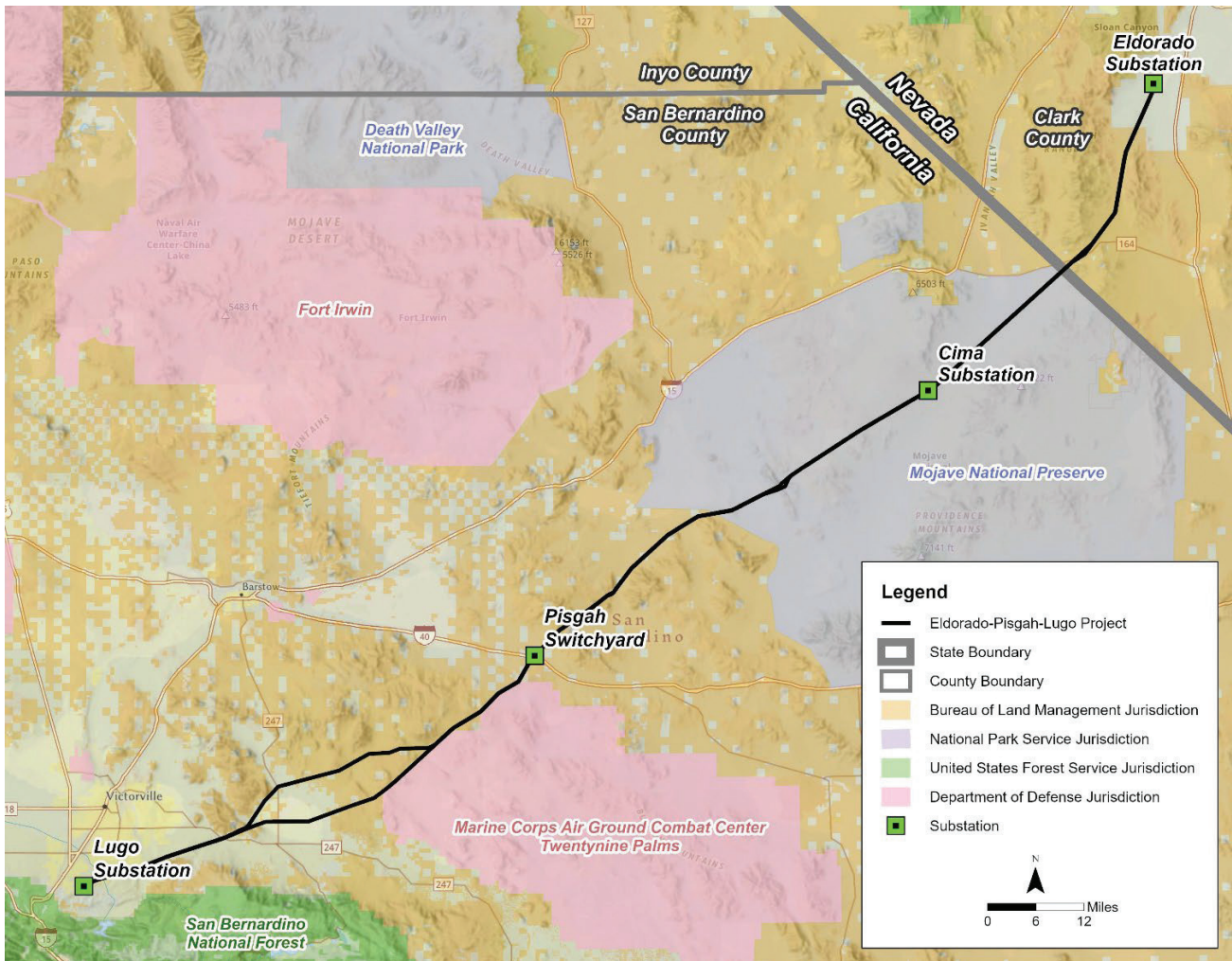


PROPOSED PROJECT

Eldorado-Pisgah-Lugo 220 kV

Anticipated Construction Period 2025-2027



About the Project

The **Eldorado-Pisgah-Lugo (EPL) 220 kV Project** will enhance the safety of Southern California Edison’s (SCE) transmission system, controlled by the California Independent System Operator (CAISO). The project is now in the initial planning phase. SCE plans to file project applications with the California Public Utilities Commission (CPUC) and the Bureau of Land Management (BLM) in 2023. If approved by the CPUC and BLM, SCE anticipates construction would begin by the end of 2025, with project completion estimated for 2027.

The primary purpose of the EPL 220 kV Project is to ensure compliance with CPUC General Order 95 (G.O. 95) and National Electrical Safety Code (NESC) standards. In particular, G.O. 95 Rules 37 through 39 specify minimum vertical and horizontal clearances that must be maintained between an electrical conductor and other conductors, or between a conductor and the ground, buildings, and a variety of other objects. Remediating the identified ground clearance discrepancies will also comply with applicable NERC reliability standards: the work will be completed as detailed in the mitigation plan filed in 2007 and as amended by SCE and accepted by the Western Electricity Coordinating Council (WECC).

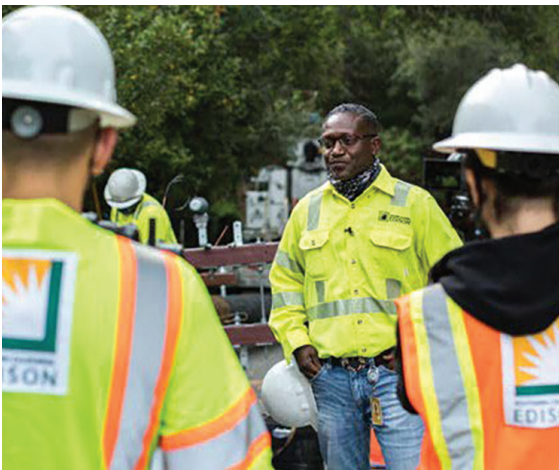
The EPL Project would remediate ground clearance discrepancies through installation of new conductor and Overhead Ground Wire (OHGW), new inter-set structures, modification of hardware and insulators and modification of equipment at an existing substation and a switchyard.



The Eldorado-Pisgah-Lugo 220 kV Project will enhance safety of SCE's transmission system in portions of San Bernardino and Clark counties.



SCE is working with the CPUC, Bureau of Land Management and National Park Service to apply mitigation measures to avoid and reduce any potential impacts.



The EPL 220 kV project will ensure compliance with CPUC G.O. 95 and National Electrical Safety Code (NESC) standards.

PROPOSED PROJECT

Eldorado-Pisgah-Lugo 220 kV

Project Location

The EPL 220 kV Project would be located in San Bernardino County, California and Clark County, Nevada, over federal lands managed by the Bureau of Land Management (BLM) and National Park Service (NPS), state lands managed by the California Department of Fish and Wildlife (CDFW) and roads managed by California Department of Transportation (Caltrans); railroad crossings managed by BNSF Railway (BNSF) and Union Pacific Railroad (UPRR); county/city lands managed by San Bernardino County, Clark County, and City of Boulder City, private lands; lands owned and managed by SCE and Clark County, Nevada.

Potential Project Activities and Impacts

Prior to construction, crews will be in the area performing survey work and testing. Once construction begins, crews may be performing the following work in your area:

- Replacing conductors (wires) and modifying structures, installing new inter-set structures in identified areas and modifying infrastructure at Cima Substation and Pisgah Switchyard
- Establishing temporary construction staging areas for crews and construction equipment, including crane and helicopter pads

For more information,
visit www.sce.com/EPLProject
or email us at
EPLinfo@sce.com