

TAKE CONTROL OF YOUR BILL

Start saving with Edison SmartConnect™

Edison SmartConnect now allows you to monitor your electricity use and costs on the Web as easily as you check your cell phone usage or your bank balance!

Start making smarter energy choices. Enroll in the new My Account at www.sce.com/MyAccount and access your personal online dashboard.

You may also call **1-866-701-7865** for more information.

Now you can see your electricity usage for each hour of the day on your computer. Just log on to the new My Account at www.sce.com/MyAccount, your personal online dashboard, to view your energy usage and sign up for savings opportunities and program alerts that can help reduce your monthly bill.

CHECK IT OUT!

With Edison SmartConnect, Southern California Edison (SCE) will be reading the meter through secure, two-way communications rather than through one on-site manual read. You can view your previous day's electricity usage information in 15-minute increments online at www.sce.com/MyAccount, anytime during your billing cycle. Knowing when and how much electricity you're using can help you identify ways to live a smart energy lifestyle.

Here are some of the things you'll have access to online:

- Sign up for **Budget Assistant** where you can select a monthly electricity spending goal and receive weekly alerts on how you are tracking.
- View your **Projected Next Bill** to see an estimate of how much your next monthly electric bill will be if your usage continues unchanged over the rest of your bill cycle.
- With **Bill-to-Date** learn how much you've been charged for electricity within your current billing cycle.

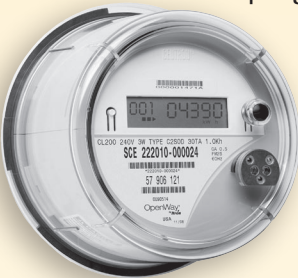
NEW
My Account at
www.sce.com



Enroll in the new My Account today at www.sce.com/MyAccount.

DID YOU KNOW?

SCE will replace approximately 5 million electricity meters with new Edison SmartConnect meters. The customer



programs and services enabled by Edison SmartConnect can help reduce greenhouse gas emissions by up to 365,000 metric tons annually – the equivalent of removing 79,000 cars from the road.

SMART FACT

As much as 5–10% of your electricity usage might be from electronic devices that are left plugged in. Cell phone chargers, computers, printers, battery powered tools, and other devices can drain electricity even when they appear to be off.



Putting a stop to the electricity drain is simple: just unplug these devices. You can also plug them into automatic outlet timers or power strips that are easy to turn off and on.

More than 2,500,000 new meters already installed!

FREE ENERGY SURVEY FOR YOUR BUSINESS

Small business customers can find out how to save by completing **SCE's Online Business Energy Survey**. The results provide recommendations to reduce your energy usage and lower your bill, in addition to rebates, incentive offers, and valuable savings tips tailored to your needs.

SCE's **free** Energy Survey is available online to help you understand where your energy dollars are going and get ideas about how to reduce your usage. Take the survey online at www.sce.com/BizSurvey.

WHAT'S THE DIFFERENCE BETWEEN DEMAND AND ENERGY CONSUMPTION?

Imagine using ten 100-watt light bulbs. The moment the 10 bulbs are turned on, they place a **demand** on the power system for 1,000 watts of electricity (10 bulbs x 100 watts each). If these bulbs are left on for one hour they will **consume** 1,000 watt-hours of energy, or 1 kWh, and your meter would register 1 kWh of energy used.

HOW SECURE IS THE EDISON SMARTCONNECT SYSTEM AND IS MY ENERGY USAGE INFORMATION CONFIDENTIAL?

SCE has developed a highly secure meter and network communications system for Edison SmartConnect, adapting many security solutions and testing protocols from the banking and defense industries. All information transmitted between individual meters and the utility is encrypted using U.S. government-approved and recommended standards. In addition, SCE maintains strict confidentiality and privacy policies, and uses state-of-the-art technologies to safeguard customer information.



Enroll in the new My Account today at www.sce.com/MyAccount.