



Wayne P. Allen
Principal Manager
Regulatory Support Service

Filed Electronically

November 21, 2023

Kimberly D. Bose, Secretary
Federal Energy Regulatory Commission
888 First Street, NE
Washington, DC 20426

**Subject: Rush Creek Project (FERC Project No. 1389)
2023 Initial Study Report Meeting Summary**

Dear Secretary Bose:

This report provides a summary of Southern California Edison Company's (SCE) 2023 Initial Study Report Meeting for the Rush Creek Hydroelectric Project (Project). The meeting was conducted virtually via Microsoft Teams on November 9, 2023, from 4:30 pm – 7:30 pm Pacific Standard Time. During the meeting, SCE provided an overview of the progress made on implementing the Federal Energy Regulatory Commission (FERC or Commission) approved Technical Study Plans (TSP) associated with the relicensing of the Project. SCE described the status of each study, including whether it is complete, has outstanding elements or variances, or is ongoing.

Attachment A provides a list of meeting attendees. Attachment B includes the meeting agenda and the PowerPoint presentation used during the meeting. Attachment C provides the Project distribution list.

Key Meeting Discussion Topics

The meeting discussion is organized into the following topic:

- Environmental Justice and Full Decommissioning Studies
- General Relicensing Process
- Meetings and Stakeholder Outreach
- Aquatic Studies
- Cultural and Tribal Studies
- Noise Studies
- Recreation Studies

Environmental Justice and Full Decommissioning Studies

During the meeting, FERC staff correctly identified that SCE had not discussed progress on two study plans approved in the Study Plan Determination (SPD), namely:

- Environmental Justice Study (new study plan proposed by FERC)
- Full Project Decommissioning Study (study plan modified by FERC)

SCE will complete the two study plans consistent with objectives and approaches identified in the SPD. The following section identifies SCE's approach for completion of each study.

Environmental Justice Study

As identified in the SPD, “the geographic scope of the analysis is all areas within 1 mile of the Project boundary.” A draft Environmental Justice Study Report will be developed and distributed to Tribes, resource agencies, and interested stakeholders in March 2024 and will include, but not be limited to, the following information:

- A table identifying the total population and the racial, ethnic, minority, and poverty statistics for each state, county, and census group within the geographic scope of analysis based on the U.S. Census Bureau’s most recently available *American Community 5-Year Estimates*.¹
- Identification of environmental justice populations by block group, using the data obtained from the U.S. Census Bureau and applying methods identified in the study plan, including in the US Environmental Protection Agency’s (EPA’s) *Promising Practices for Environmental Justice Methodologies in NEPA reviews*.²
- Identification of any non-English-speaking groups within the geographic scope of analysis that would be affected by the Project (regardless of whether the group is part of an identified environmental justice community). Documentation of efforts made to identify non-English-speaking groups will also be included.
- A map showing the Project boundaries and location(s) of any proposed Project-related construction in relation to any identified environmental justice communities and/or non-English-speaking group within the geographic scope. The map will also denote if the block group is identified as an environmental justice community based on the presence of a minority population, low-income population, or both.
- A discussion of anticipated Project-related effects on any environmental justice communities for all resources where there is a potential nexus between the effect and the environmental justice community.
- Results of initial outreach with Native American Tribes to facilitate early identification of any environmental justice issues.
- If new construction is proposed, identification of sensitive receptor locations (e.g., schools, daycare centers, hospitals) within the geographic scope of analysis.
- A proposed plan for public and tribal outreach, if environmental justice communities are present (including non-English-speaking groups) within the geographic scope of analysis.

Following distribution of the draft study report in March 2024, SCE will collaborate with interested Tribes and stakeholders to identify the need for and/or suggested modification to SCE’s approach for public and tribal outreach, including non-English-speaking groups. A summary of any updated and new information received during outreach activities will be included in the Final Study Report

¹ U.S. Census Bureau (Census). 2020. 2019 American Community Survey 5-year Estimate Detailed Tables B03002 and B17017. Available at: <https://data.census.gov>.

² EPA. 2016. Promising Practices for EJ Methodologies in NEPA Reviews. Report of the Federal Interagency Working Group on Environmental Justice and NEPA Committee. Available at: https://www.epa.gov/sites/default/files/2016-08/documents/nepa_promising_practices_document_2016.pdf.

Ms. Kimberly Bose
Page 3
November 21, 2023

distributed to Tribes, resource agencies, and interested stakeholders in the Draft License Application (September 2024). This information will also be summarized in the Updated Study Report (October 2024). The additional information provided in the Final Study Report will include, but will not be limited to, the following:

- If environmental justice communities are present, a description of SCE's public outreach efforts regarding the Project and results of the outreach activities.
- A description of any mitigation measures proposed to avoid and/or minimize disproportionate Project effects on environmental justice communities, if any.
- A description of efforts to communicate with non-English-speaking groups that would be affected by the Project and a summary of results of the outreach activities.
- Any proposed measures to avoid and/or minimize any disproportionate Project-related effects to non-English-speaking groups, if any.
- Documentation of consultation conducted with entities that expressed interest in environmental justice, copies of comments received, and an explanation of how comments were addressed.

Full Decommissioning Study

Based on FERC staff recommendations in the SPD, study reports will be developed and distributed to Tribes, resource agencies, and interested stakeholders in two phases (Phase I and Phase II Study Reports) to provide a feasibility assessment of full Project decommissioning, including options to remove all Project facilities or leave all/some in place. The following identifies SCE's approach for completion of each phase of the study.

Phase I Study

The following identifies Phase I study activities that will be completed by March 2024 and their associated reporting milestones.

Reporting of Phase I of the study will occur in March 2024 and will include the following information:

- A general feasibility discussion with description of each decommissioning option (e.g., removing all facilities, leaving all/some facilities in place).
- The Pre-Application Document (PAD) filed with FERC on December 16, 2021, included a description of the following Project options:
 - Partial and full removal of Agnew Dam,
 - Partial and full removal of Rush Meadows Dam, and
 - Lowering and retrofitting of Gem Dam.

- The Phase I Study Report will also incorporate the following:
 - A description of full removal of Gem Dam consistent with the level of detail included in the PAD for the other Project options, and
 - Decommissioning of the powerhouse and associated facilities.
- Estimates of associated capital, operational (including lost power production), and maintenance costs for each decommissioning option.
- A description of possible flow and water level changes (including potential for flooding) that may occur under each option will be provided. Socioeconomic impacts of potential flooding will be analyzed in Phase II of the study (see below).
- A description of the study approach (developed in collaboration with resource agencies, Tribes, and other interested stakeholders) to characterize the types and quantities of any accumulated sediment that would be released from behind each dam, including the presence of any known contaminants that could be released downstream. The approach will identify data that will be collected in the summer/fall of 2024 to complete the study and identify any Forest Service authorizations necessary to implement the study.

Following distribution of the Phase I Study Report in March 2024, SCE will collaborate with interested Tribes, resource agencies, and stakeholders in Technical Working Group (TWG) meetings to identify any revisions/modifications to the report.

Phase II Study

The following identifies Phase II study activities that will be completed in 2024 following distribution of the Phase I Study Report and their associated reporting milestones.

- Socioeconomic effects associated with any changes in flow and water levels (including potential for flooding) will be incorporated into the Draft License Application (September 2024).
- Detailed resource-specific analysis and reporting on the potential physical and environmental benefits and concerns associated with each decommissioning option will be included in the Final License Application (January 2025) once all the FERC-approved field studies, modeling, and technical reports are completed.
- Characterization of the types and quantities of any accumulated sediment that would be released from behind each dam, including the presence of any known contaminants that could be released downstream.
 - Collection and analysis of sediment data in Waugh Lake, Gem Lake, and Agnew Lake will be implemented in the summer/fall of 2024.
 - Characterization of lakebed topography, sediment, and presence of any known containments at Waugh Lake will occur when the reservoir is drained, which typically occurs in late August to September depending on runoff conditions and whether the low-level outlet is free of obstructions.

Ms. Kimberly Bose
Page 5
November 21, 2023

- Laboratory results for identification of potential containments in the sediment are expected to be available in October/November 2024. Sediment transport modeling results are expected to be available in December 2024.
- A summary of study results will be included in the Phase II Study Report that will be distributed to Tribes, resource agencies, and interested stakeholders in the Final License Application (January 2025).

General Relicensing Process

In accordance with section 5.15(c)(4) of the Commission's regulations, 18 C.F.R. § 5.15(c)(4), and the Process Plan and Schedule established by FERC staff for this Integrated Licensing Process, relicensing participants have until December 26, 2023, to file any requested study modifications or new studies for FERC staff's consideration. Any such requests must meet the requirements of section 5.15(d) (for proposed modifications to a study) and section 5.15(e) (for any proposed new study), and must address FERC's study criteria in section 5.9(b). Links to the FERC website and criteria were provided by FERC staff during the meeting and are included below:

- Section 5.15(d), criteria for modification of an approved study: [https://www.ecfr.gov/current/title-18/part-5/section-5.15#p-5.15\(d\)](https://www.ecfr.gov/current/title-18/part-5/section-5.15#p-5.15(d))
- Section 5.15(e), criteria for a new study: [https://www.ecfr.gov/current/title-18/part-5/section-5.15#p-5.15\(e\)](https://www.ecfr.gov/current/title-18/part-5/section-5.15#p-5.15(e))
- A Guide to Understanding and Applying the Integrated Licensing Process Study Criteria: <https://www.ferc.gov/sites/default/files/2020-04/AGuidetoUnderstandingandApplyingtheIntegratedLicensingProcessStudyCriteria.pdf>
- Relicensing participants may efficiently submit comments via the e-comment system. Link to the FERC e-comment system:
 - <https://ferconline.ferc.gov/QuickComment.aspx>, docket P-1389

Meetings and Stakeholder Outreach

During the ISR meeting, several stakeholders indicated a preference for in-person meetings when possible. SCE noted this interest and committed to, when possible, hold in-person meetings in the June Lake area. SCE noted that the decision to hold this ISR meeting virtually was made following a survey of stakeholders in which the majority of respondents indicated a preference for a virtual meeting.

Aquatic Studies

Restoration of Agnew Lake and Rush Creek (AQ-1 Instream Flow, AQ-2 Hydrology, AQ-5 Geomorphology, TERR-1, Botanical Resources)

- Bob Marks, a stakeholder, suggested that the studies should include restoration of Agnew Lake and Rush Creek to pre-dam conditions and that studies should include a discussion of pre-Project conditions in Rush Creek and Agnew Lake. Bob Marks stated that he has information about conditions pre-1915 in the Agnew Lake and Rush Creek areas. He also expressed interest in the quantity of water diverted from Rush Creek by the Project.

- SCE's outside council Elizabeth McCormick noted that FERC regulations do not include requirements related to pre-project conditions.
- Consultant Craig Addley clarified that the intention of the studies is to collect data to evaluate current environmental conditions, potential Project effects, and provide information which would support restoration efforts, as appropriate. SCE welcomes any historical data at Agnew Lake and Rush Creek and will reach out to Bob Marks for additional information.
- Stakeholders interested in SCE water rights should refer to the Pre-application Document (PAD) available at <https://sce.com/rushcreek>. In terms of the quantity of water diverted by the Project, the maximum capacity of the flowline to the Rush Creek Powerhouse is approximately 100 cubic feet per second (cfs).
- Robert Nailon, a stakeholder, asked about sediment sources from SCE in relation to sediment inflow into Silver Lake.
 - Consultant Craig Addley explained that the AQ-5 Geomorphology study was quantifying sediment sources in the watershed and that the data were in process of being collected. He also explained that the reservoirs (Gem, Agnew) capture sediment and likely reduce sediment inflows into Silver Lake.

Amphibian Habitat Surveys (AQ-7, Special-status Amphibians)

- Meghan Quinn with American Rivers had questions about the amphibian habitat survey in context of the wet water year in 2023. Specifically, was the habitat surveyed in 2023 representative of potential habitat conditions that might be present in drier years?
 - Consultant Robyn Smith noted that agency-approved survey guidelines (i.e., Fellers and Freel 1995³, U.S. Fish and Wildlife Service [USFWS] 2014⁴) recommend surveying in a wet water years (i.e., 80% percent or greater than normal for the area) for both Sierra Nevada Yellow-legged frog (SNYLF) and Yosemite Toad (YT). Conducting a survey for breeding habitat in a dry year may lead to false conclusions that habitat is unsuitable because some sites that contain suitable habitat in wet years may not retain water long enough for completion of metamorphosis in drought or below average precipitation years⁵. For example, YT may skip breeding activities in dry years entirely, but would still require these habitats for the maintenance of long-term population dynamics⁶. Completing the habitat surveys in 2023 (a-wet water year) enabled mapping of the largest possible area of suitable amphibian habitat that may not have been captured if habitat

³ Fellers, G.M., and K.L. Freel. 1995. A Standardized Protocol for Surveying Aquatic Amphibians. National Park Service Technical Report NRTR-95-01. May 1995.

⁴ USFWS. 2014. Programmatic Biological Opinion on Nine Forest Programs on Nine National Forests in the Sierra Nevada of California for the Endangered Sierra Nevada Yellow-legged Frog, Endangered Northern Distinct Population Segment of the Mountain Yellow-legged Frog, and Threatened Yosemite Toad. December 19, 2014.

⁵ Ibid.

⁶ U.S. Fish and Wildlife Service (USFWS). 2016. Designation of Critical Habitat for Sierra Nevada Yellow-legged Frog and Northern Distinct Population Segment of the Mountain Yellow-legged Frog, and Threatened Species Status for Yosemite Toad; Final Rule (Federal Register Vol. 81, No. 166, Pages 59046–59119), August 26, 2016.

surveys were conducted in dry years. Not all of the habitats mapped in 2023 may be suitable for breeding in dry years.

- Quinn Emmering with FERC had follow-up questions about habitat suitability for SNYLF in Project-affected stream reaches.
 - Consultant Robyn Smith clarified that preliminary findings indicate no suitable breeding habitat for Sierra Nevada yellow-legged frog (SNYLF) in the Project-affected stream reaches. While many of the stream reaches contain some of the Primary Constituent Elements (PCEs) of breeding habitat, all Project-affected stream segments have predatory fish populations and, therefore, do not meet all of the breeding PCEs per USFWS definitions of suitable SNYLF breeding habitat (USFWS 2016). However, there is one isolated pond within the FERC Project boundary on the south shore of Waugh Lake that lacks predators and does contain all breeding PCEs for SNYLF.

Rush Creek Channel Conditions Below State Route 158 (AQ-1 Instream Flow, AQ5 Geomorphology, TERR-1 Botanical Resources)

- Following information about the wetland delineation conducted in the study area, Ralph Lockhart, a stakeholder and landowner, asked about debris (e.g., logs) clogging Rush Creek in the vicinity of State Route (SR) 158 (upstream and downstream) and asked about responsibility for maintenance of the creek.
 - Consultant Ed Bianchi noted that the geomorphic study is evaluating conditions in the Rush Creek channel in the vicinity of SR 158 and modeling flows through that channel under existing conditions as well as under full and partial dam removal scenarios.

Cultural and Tribal Studies (CUL-1 Built Environment, CUL-2 Archeology, TRI-1 Tribal Resources)

Built Environment (CUL-1)

- Bob Marks, stakeholder, noted that references to two Historical American Engineering Record (HAER) reports on Agnew Lake Dam and Gem Lake Dam (HAER CA-166 F and G) were not identified in the Technical Study Plan.
 - SCE's Cultural Technical Lead Audry Williams confirmed that SCE has the HAER studies and will verify that they are referenced in future reports/documents.
- Colleen McNally-Murphy with American Rivers asked whether Tribes were involved in the built environment study.
 - SCE's Cultural Technical Lead Audry Williams noted that tribal monitors did participate in the archaeological survey but not specifically the built environment survey. She noted that some of the built environment survey happened at the same time as the archaeological surveys.
- Dean Tonenna, with the Mono Lake Kutzadikaa Tribe, noted he was a tribal participant during the archaeological survey and did not see all of the aspects of the built environment.

He noted that it is important that SCE follow up with the Tribes regarding the built environment elements.

- Jazzmyn Gegere Brochini, with the American Indian Council of Mariposa County (S. Sierra Miwuk National), asked about receipt of documentation regarding the eligibility of cultural resources.
 - SCE's Cultural Technical Lead Audry Williams clarified that eligibility determination for cultural resources will be completed in 2024. Once complete, SCE will make the report available.
- Bob Marks, stakeholder and Michael Lerch, consultant exchanged information regarding pertinent articles about the Kutzadikaa Tribe.

Noise Studies (LAND-2, Noise)

- Bob Marks, a stakeholder, expressed concern regarding helicopter noise and the potential residential noise experience/exposure associated with round-trip flights during dam demolition. The stakeholder's questions touched on flight paths (whether the route would be in front of or behind Carson Peak), construction seasons (whether construction would be completed in consecutive seasons), and whether dam demolition would occur on multiple structures concurrently. The stakeholder also asked about the potential to avoid removing all dam material from the immediate area. Finally, the stakeholder noted his preference that helicopter noise studies be conducted with actual helicopter sky cranes and in-person readings as opposed to computer simulations.
 - Consultant Ed Bianchi responded that SCE is aware of the significant helicopter noise that would be associated with demolition. The relicensing process is in the study implementation phase intended to provide more information about Project-related noise impacts. The data being gathered will inform construction/demolition options. The consultant noted there are options for full removal and partial removal, including options to leave the majority of the material at the site and not fly it out. He clarified that at this time it has not been determined which option will be chosen. He encouraged the stakeholder to file any request for study modifications with FERC.

Recreation Studies (REC-1, Recreation)

- Ann Mahoney, a stakeholder with East Shore Silver Lake Improvement Association (ESSLIA), asked whether SCE/consultants were collecting information (including from Double Eagle Resort) about the number of people who use Silver Lake for on-water recreation including for paddle boarding and fishing. The stakeholder noted that it is important to look at all the areas that might be negatively affected by the Project.
 - Consultant Patricia Sussman clarified that the field data collection study area for recreation was limited to the FERC boundary. However, an objective of the Recreation Technical Study includes characterizing the recreation setting and opportunities in the larger Rush Creek watershed, including the recreational areas accessible from SR 158.

Ms. Kimberly Bose
Page 9
November 21, 2023

Next Steps


SCE filed this meeting summary on November 21, 2023 and concurrently distributed the summary to stakeholders on the Project distribution list (Attachment C). Any stakeholder or Commission staff may file a disagreement concerning the meeting summary on or before December 26, 2023, as identified in the Process Plan and Schedule contained in Appendix A of the Commission's Scoping Document 2 for the Rush Creek Project. Comments should identify any disagreements and any requests to amend ongoing studies, or new studies proposed.

Technical study reports will be distributed to stakeholders for a 90-day review and comment period in February-March 2024 summarizing results from implementation of the FERC-approved technical studies, including the Environmental Justice and Full Decommissioning studies. SCE will conduct technical working group (TWG) meetings, by resource area, during the review period to review and discuss the study results. SCE will also be available during the TWG meetings to discuss stakeholder requests for study modification and/or the need for new studies. Any study plan changes and/or study disputes will be filed with FERC. Results of study implementation in 2024 will be distributed to stakeholders in the Draft License Application (September 2024) and Final License Application (January 2025). Results from 2024 studies will also be addressed in the Updated Study Report and Meeting (October 26, 2024 and November 10, 2024, respectively).

The 2023 Initial Study Report and other Rush Creek Hydroelectric Project relicensing documents can be obtained from the FERC's website at <http://www.ferc.gov/docs-filing/elibrary> or SCE's Rush Creek Project relicensing website at <http://sce.com/rushcreek>.

SCE looks forward to working with FERC staff and interested stakeholders as the relicensing of the Rush Creek Project proceeds. If you have any questions regarding this filing, please contact Matthew Woodhall, SCE Relicensing Project Manager, by phone at (909) 362-1764 or via e-mail at matthew.woodhall@sce.com.

Sincerely,

DocuSigned by:

106CF18A73D445F...

Wayne P. Allen
Principal Manager

Attachments:

- Attachment A: Attendance List
- Attachment B: Agenda and PowerPoint Presentation
- Attachment C: Distribution List

Attachment A

List of Meeting Attendees

2023 Initial Study Report Meeting Summary
Attachment A – List of Meeting Attendees

Name	Affiliation
Quinn Emmering	Federal Energy Regulatory Commission
Evan Williams	
Everard Baker	
Frank Winchell	
Ousmane Sidibe	
Graham Meese	California Department of Fish and Wildlife
Beth Lawson	
Ashley Blythe Haverstock	US Forest Service, Region 5
Tristan Leong	
Eric Rios-Bertado	
Jazzmyn Gegere (Brochini)	American Indian Council of Mariposa County
Bartshe Miller	Mono Lake Committee
Greg Reis	
Bob Gardner	Mono County Supervisor
Ralph Lockhart	Double Eagle Resort
Kent Dohnel	Frontier Pack Train
Justin Dohnel	
Colleen McNally-Murphy	American Rivers
Meghan Quinn	
Garrett Long	State Water Board
Adam Cohen	
Marrina Nation	California Trout
Dean Tonenna	Mono Lake Kukzadikaa Tribe
Ann Marie Mahoney	East Shore Silver Lake Improvement Association (ESSLIA)
Jim Mahoney	
Don Goffinet	
Daniel Mazmanian	
Allison Weber	Friends of the Inyo
Robert Marks	Public
Andrew Zdon	
Rachel Maxwell	
Terry Plum	
Paul McFarland	
Jeff Yanez	
Greg James	
Robert Nailon	
Karen Gardner	
David Rosky	
Sue Burak	

2023 Initial Study Report Meeting Summary
Attachment A – List of Meeting Attendees

Dorothy Burdette	
Phil Sutphin	
Martin Ostendorf	Southern California Edison (SCE)
Matthew Woodhall	
Seth Carr	
Matthew C Paruolo	
Audry Williams	
Elizabeth McCormick	
Patrick Le	
Ed Bianchi	Consultants to SCE
Patricia Sussman	
Jennifer Hammond	
Kelleigh Crowe	
Allyson Osborn	
Craig Addley	
Scott Thompson	
James Clark	
Robyn Smith	
Michael Lerch	
Patrick Kester	

Attachment B

Agenda and PowerPoint Presentation

2023 Initial Study Report Meeting Summary
Attachment B – Agenda and PowerPoint Presentation



Rush Creek Hydroelectric Project (P-1389) Initial Study Report Meeting

Thursday, November 9, 2023; 4:30 PM-7:00 PM, Pacific Time

Microsoft Teams: <https://www.microsoft.com/microsoft-teams/join-a-meeting>

Meeting ID: 258 069 086 546

Passcode: 5kpPGa

Call In: +1 587-414-2460,,686992723#

Time	Item
4:30-4:40	<ul style="list-style-type: none"> • Welcome and Introductions <ul style="list-style-type: none"> - Safety Moment - Meeting Tips
4:40-5:00	<ul style="list-style-type: none"> • Meeting Purpose and Initial Study Report • Relicensing Process and Schedule
5:00-6:50*	<ul style="list-style-type: none"> • Technical Study Plan Implementation <ul style="list-style-type: none"> - Aquatic Resources <ul style="list-style-type: none"> ▪ AQ-1 Instream Flow ▪ AQ-2 Hydrology ▪ AQ-3 Water Temperature ▪ AQ-4 Water Quality ▪ AC-5 Geomorphology ▪ AQ-6 Fish Population and Barriers ▪ AQ-7 Special-status Amphibians BREAK (5 minutes) <ul style="list-style-type: none"> - Cultural and Tribal Resources <ul style="list-style-type: none"> ▪ CUL-1 Built Environment ▪ CUL-2 Archaeology ▪ TRI-1 Tribal Resources - Land Resources <ul style="list-style-type: none"> ▪ LAND-1 Aesthetics ▪ LAND-1 Noise - Recreation Resources <ul style="list-style-type: none"> ▪ REC-1 Recreation - Terrestrial Resources <ul style="list-style-type: none"> ▪ TERR-1 Botanical ▪ TERR-2 Wildlife
6:50-7:00	<ul style="list-style-type: none"> • Next Steps and Key Contacts
7:00	Adjourn

*Times are approximate and subject to change during the meeting.

2023 Initial Study Report Meeting Summary
 Attachment B – Agenda and PowerPoint Presentation

EDISON
Energy for What's Ahead™

Rush Creek Project

FERC Project No. 1389

Initial Study Report Meeting

November 9, 2023

Please hold, we will begin shortly. Thank you for your patience and for muting your microphone.

1 Energy for What's Ahead™

1

2 Energy for What's Ahead™

2

Introductions

Relicensing Team

- Matthew Woodhall, SCE Licensing Manager
- Martin Ostendorf, SCE Senior Manager
- Seth Carr, SCE Senior Supervisor, Generation-Operations and Maintenance
- Matthew Paruolo, SCE Government Relations Manager
- Audrey Williams, SCE Cultural Technical Lead
- Ed Bianchi, Stantec Project Director
- Patricia Sussman, Stantec Project Manager

3 Energy for What's Ahead™

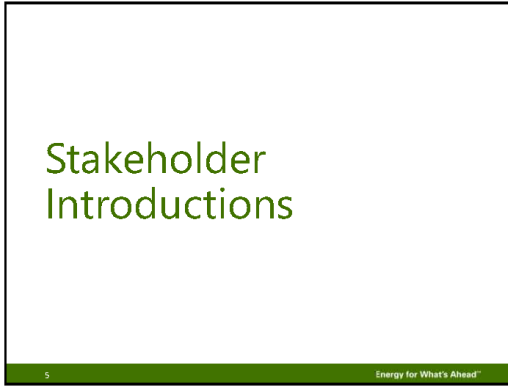
3

Consultant Team Technical Leads

Name	Role/Resource
Craig Addley (Kleinschmidt) Jennifer Hammond (Stantec) Robyn Smith (Janelle Nolan & Associates Environmental Consulting)	Aquatics AQ-1, AQ-2, AQ-3, AQ-4, AQ-5, AQ-6, AQ-7
Crystal West (Stantec) James Clark (Statistical Research, Inc.) Scott Thompson (Statistical Research, Inc.) Michael Lerch (Michael K. Lerch & Associates)	Cultural and Tribal CUL-1, CUL-2, TR-1
Patricia Sussman (Stantec) Patrick Kester (Stantec-GSA)	Land (Aesthetics and Noise) LAND-1, LAND-2
Patricia Sussman (Stantec)	Recreation REC-1
Janelle Nolan (Janelle Nolan & Associates Environmental Consulting) Robyn Smith (Janelle Nolan & Associates Environmental Consulting)	Terrestrial (Botanical and Wildlife) TERR-1, TERR-2

4 Energy for What's Ahead™

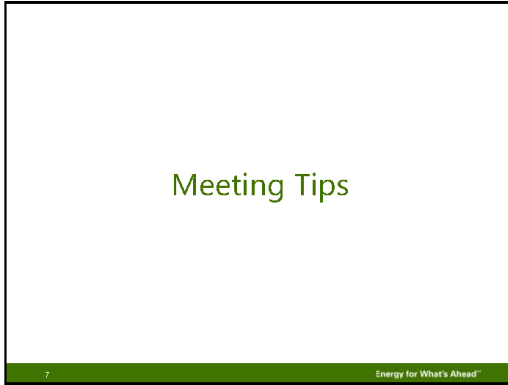
4



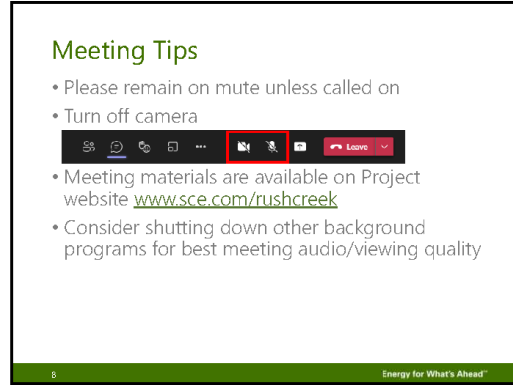
5



6



7



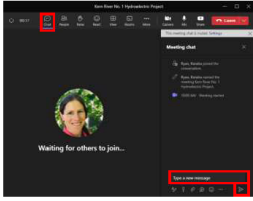
8

2023 Initial Study Report Meeting Summary
Attachment B – Agenda and PowerPoint Presentation

Meeting Tips

To submit a question/comment in writing:

- Utilize the chat feature during the presentation to submit questions/comments
- Questions submitted via the chat feature will be answered at the end of each agenda topic, as time allows




9 Energy for What's Ahead™

9

Meeting Tips

To submit a question/comment verbally:

- Use the "Raise Hand" feature to indicate you would like to ask a question verbally
- Please wait to be called on and then unmute yourself
 - Introduce yourself (name and affiliation) prior to speaking
- Please stay on topic



10 Energy for What's Ahead™

10

Agenda

- Meeting Purpose
- Initial Study Report
- Relicensing Process and Schedule
- Technical Study Plan Implementation
- Key Contacts
- Adjourn

11 Energy for What's Ahead™

11

Meeting Purpose

- Provide an update on overall study plan implementation and any proposals to modify ongoing studies or conduct new studies.
 - Presentations on each Technical Study Plan will cover:
 - Completed Study Elements/Data Collected
 - Technical Working Group Consultation
 - Technical Study Plan Variances
 - Outstanding Study Elements
 - Proposed Modifications (none)
 - Proposed New Studies (none)

12 Energy for What's Ahead™

12

2023 Initial Study Report Meeting Summary
 Attachment B – Agenda and PowerPoint Presentation

Initial Study Report

- Initial Study Report filed on Oct 26, 2023
- Initial Study Report components:
 - Cover Letter
 - Attachment A – Distribution List
 - Attachment B – TSP Implementation Summary
 - Attachment C – TSP Implementation Schedule
- Available for download:
 - www.sce.com/rushcreek
 - www.ferc.gov/docs-filing/elibrary.asp

13

Technical Study Implementation Initial Study Report (Attachment B)

Technical Study Phase	Study Elements Completed / Not Completed	Work Group Milestones / Completion Dates	Technical Study Plan Variations	Outstanding Study Elements	Modifications to Ongoing Studies	Proposed New Studies
001.1 - Interagency	<ul style="list-style-type: none"> Established the Interagency Study Group Developed the Interagency Study Plan Conducted the Interagency Study Meeting Developed the Interagency Study Report 	<ul style="list-style-type: none"> Interagency Study Meeting: Oct 26, 2023 Interagency Study Report: Nov 15, 2023 	<ul style="list-style-type: none"> Interagency Study Plan Variations: Oct 26, 2023 Interagency Study Report: Nov 15, 2023 	<ul style="list-style-type: none"> Outstanding Study Elements: Interagency Study Report (Nov 15, 2023) 	<ul style="list-style-type: none"> Modifications to Ongoing Studies: Interagency Study Report (Nov 15, 2023) 	<ul style="list-style-type: none"> Proposed New Studies: Interagency Study Report (Nov 15, 2023)
001.2 - Interagency	<ul style="list-style-type: none"> Established the Interagency Study Group Developed the Interagency Study Plan Conducted the Interagency Study Meeting Developed the Interagency Study Report 	<ul style="list-style-type: none"> Interagency Study Meeting: Oct 26, 2023 Interagency Study Report: Nov 15, 2023 	<ul style="list-style-type: none"> Interagency Study Plan Variations: Oct 26, 2023 Interagency Study Report: Nov 15, 2023 	<ul style="list-style-type: none"> Outstanding Study Elements: Interagency Study Report (Nov 15, 2023) 	<ul style="list-style-type: none"> Modifications to Ongoing Studies: Interagency Study Report (Nov 15, 2023) 	<ul style="list-style-type: none"> Proposed New Studies: Interagency Study Report (Nov 15, 2023)

14

Technical Study Implementation Initial Study Report (Attachment C)

15

Relicensing Process and Schedule

16

2023 Initial Study Report Meeting Summary
 Attachment B – Agenda and PowerPoint Presentation

Technical Study Implementation 15 Technical Study Plans approved by FERC

Aquatic Resources	Land Resources
AQ-1 Instream Flow	LAND-1 Aesthetics
AQ-2 Hydrology	LAND-2 Noise
AQ-3 Water Temperature	
AQ-4 Water Quality	Recreation Resources
AQ-5 Geomorphology	REC-1 Recreation Resources
AQ-6 Fish Population and Barriers	
AQ-7 Special-status Amphibians	Terrestrial Resources
Cultural and Tribal Resources	TERR-1 Botanical
CUL-1 Built Environment	TERR-2 Wildlife
CUL-2 Archaeology	
TRI-1 Tribal Resources	

21 Energy for What's Ahead™

21

Project Area

22 Energy for What's Ahead™

22

Technical Study Implementation Data Collection

- Study Plan Determination October 2022 precluding field work until 2023 due to high elevation of the Project and limited road access.
- Field studies were delayed in 2023 due to record snowpack and prolonged high runoff.
 - Most studies were delayed until late July /early August 2023
 - Aquatic-related studies did not commence until mid-August/early September 2023 and are continuing into November
 - Waugh Lake did not drain sufficiently this year to commence most lakebed studies

23 Energy for What's Ahead™

23

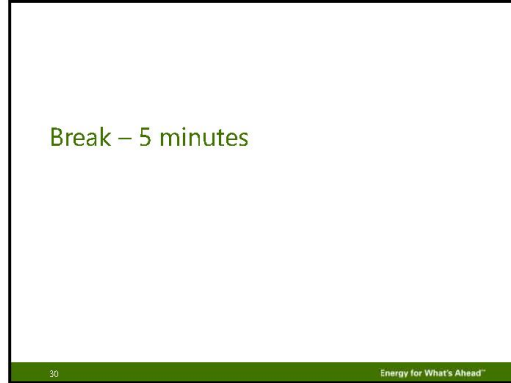
24 Energy for What's Ahead™

24

2023 Initial Study Report Meeting Summary
Attachment B – Agenda and PowerPoint Presentation



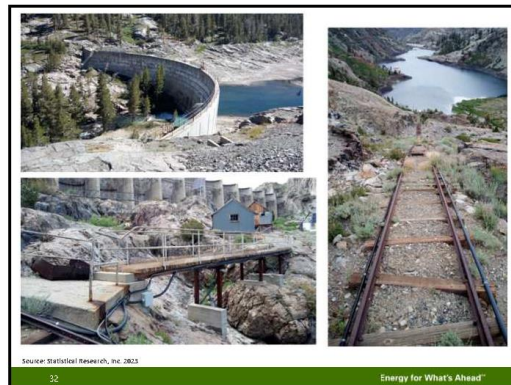
29



30

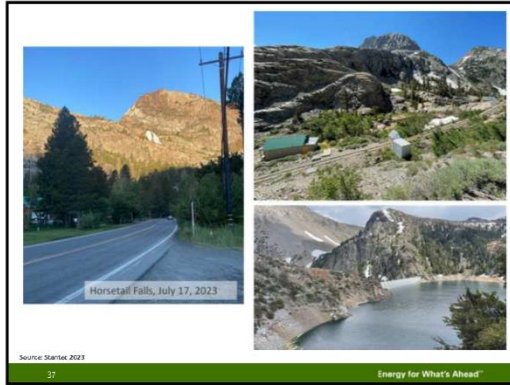


31

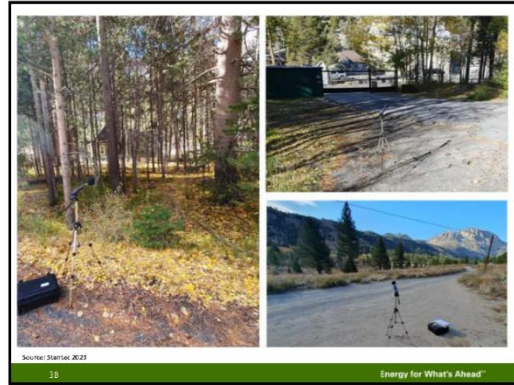


32

2023 Initial Study Report Meeting Summary
Attachment B – Agenda and PowerPoint Presentation



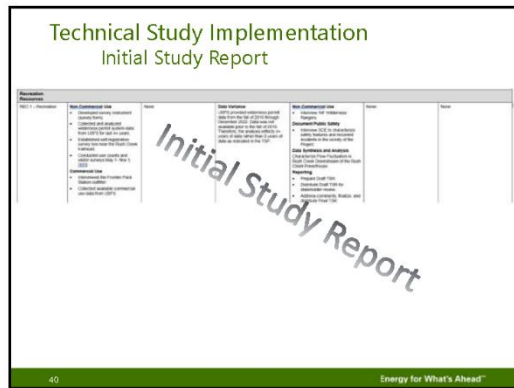
37



38

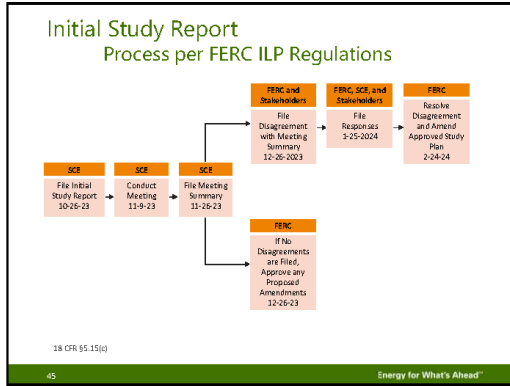


39



40

2023 Initial Study Report Meeting Summary
Attachment B – Agenda and PowerPoint Presentation



45

Where to Get Information:

Register online to be notified via email of new filings and issuances related to the Rush Creek Project

- www.ferc.gov/esubscribenow.htm

Access documents filed related to the Rush Creek Project

- FERC's eLibrary: <https://www.ferc.gov/ferc-online/elibrary>
- SCE's relicensing website: www.sce.com/rushcreek

Submit comments at:

- FERC's eFiling: <https://ferconline.ferc.gov/QuickComment.aspx>

46 Energy for What's Ahead™

46

Key Contact Information

Name	Role/Resource	E-mail	Phone
Federal Energy Regulatory Commission			
Quinn Emmering	Project Coordinator & Wildlife Biologist	quinn.emmering@ferc.gov	(202) 502-6382
Southern California Edison			
Matt Woodhall	Generation - Regulatory Support Services	matthew.woodhall@sce.com	(626) 302-9596

47 Energy for What's Ahead™

47

Attachment C

Distribution List

2023 Initial Study Report Meeting Summary
Attachment C – Distribution List

Stakeholder	Contact	Mailing Address	Email Address
Agencies - Federal, State and Local			
Advisory Council on Historic Preservation	John Eddins, Archaeologist/Program Analyst, Office of Federal Agency Programs	401 F Street NW, Suite 308 Washington, DC 20001-2637	jeddings@achp.gov
Board of Supervisors, Mono County	Shannon Kendall, Clerk of the Board	P.O. Box 715 Bridgeport, CA 93517	BOS@mono.ca.gov
Bonneville Power Administration	Scott Wilson, Account Executive	P.O. Box 3621 Portland, OR 97208-3621	skwilson@bpa.gov
Bureau of Indian Affairs	Amy Dutschke, Regional Director	2800 Cottage Way Sacramento, CA 95825	amy.dutschke@bia.gov
Bureau of Indian Affairs	Darryl LaCounte, Director	1849 C Street NW MS-2624 MIB Washington, DC 20240	Darryl.lacounte@bia.gov
Bureau of Reclamation	Pacific Northwest Region	1150 N Curtis Rd Boise, ID 83706-1234	pninfo@usbr.gov
Bureau of Reclamation	Ernest Conant, Regional Director, California-Great Basin	2800 Cottage Way Sacramento, CA 95825-1886	ECONANT@usbr.gov
Bureau of Reclamation	Camille Calimlim Touton, Deputy Commissioner	1849 C Street NW Washington, DC 20240	mariacamille_touton@ios.doi.gov
California Conservation Corps	Bruce Saito, Director	1719 24th Street Sacramento, CA 95816-7114	Exec@ccc.ca.gov
California Conservation Corps	Angel Lizaola, Conservationist Supervisor	1824 Commerce Center Circle San Bernardino, CA 92408	angel.lizaola@ccc.ca.gov
California Department of Conservation	David Shabazian, Director	MS 24-01 801 K Street Sacramento, CA 95814-3500	david.shabazian@conservation.ca.gov
California Department of Fish and Wildlife	Beth Lawson	North Central Region - Water Program 1701 Nimbus Road, Suite A Rancho Cordova, CA 95670	Beth.Lawson@wildlife.ca.gov
California Department of Fish and Wildlife, Region 6	Patricia Moyer	787 North Main Street, Suite 220 Bishop, CA 93514	Patricia.Moyer@wildlife.ca.gov
California Department of Fish and Wildlife, Region 6	Nick Buckmaster	787 North Main Street, Suite 220 Bishop, CA 93514	Nick.Buckmaster@wildlife.ca.gov

2023 Initial Study Report Meeting Summary
Attachment C – Distribution List

Stakeholder	Contact	Mailing Address	Email Address
California Department of Fish and Wildlife, Region 6	Alyssa Marquez, Environmental Scientist	787 North Main Street, Suite 220 Bishop, CA 93514	alyssa.marquez@wildlife.ca.gov
California Department of Fish and Wildlife, Region 6	Brandy Wood	787 North Main Street, Suite 220 Bishop, CA 93514	brandy.wood@wildlife.ca.gov
California Department of Forestry and Fire Protection	Allen Robertson, Coordinator	P.O. Box 944246 Sacramento, CA 94244-2460	
California Department of Parks and Recreation		P.O. Box 942896 Sacramento, CA 94296-0001	
California Department of Transportation	Clint Weier, CMAS	500 South Main Street Bishop, CA 93514-3423	clint.weier@dot.ca.gov
California Department of Transportation	Greg Miller, CT MII		greg.miller@dot.ca.gov
California Department of Water Resources	Director	P.O. Box 942836, Room 1115-1 Sacramento, CA 94236-0001	karla.nemeth@water.ca.gov
California Office of Attorney General		P.O. Box 944255 Sacramento, CA 94244-2550	
California Office of Historic Preservation	Michael McGuirt		michael.mcguirt@parks.ca.gov
California Office of Historic Preservation	Brendon Greenaway		brendon.greenaway@parks.ca.gov
California Office of Planning and Research	Scott Morgan, Acting Director	1400 10th Street Sacramento, CA 95814-5502	scott.morgan@opr.ca.gov
California State Lands Commission	Executive Officer	100 Howe Avenue, Suite 100 South Sacramento, CA 95825	Jennifer.Lucchesi@slc.ca.gov
California State Lands Commission	Lucinda Calvo, Senior Attorney		lucinda.calvo@slc.ca.gov
California State Water Resources Control Board	Parker Thaler	P.O. Box 100 Sacramento, CA 95812-0100	parker.thaler@waterboards.ca.gov
California State Water Resources Control Board	Jill North	P.O. Box 100 Sacramento, CA 95812-0100	jill.north@waterboards.ca.gov
California State Water Resources Control Board	Rajaa Hassan	P.O. Box 100 Sacramento, CA 95812-0100	rajaa.hassan@waterboards.ca.gov
California State Water Resources Control Board	Dayne Kendrick		dayne.kendrick@waterboards.ca.gov

2023 Initial Study Report Meeting Summary
Attachment C – Distribution List

Stakeholder	Contact	Mailing Address	Email Address
California State Water Resources Control Board	Garrett Long		Garrett.Long@Waterboards.ca.gov
CDFW	Michael Tovar	CDFW- Inland Deserts Region 6 Habitat Conservation Program Supervisor 787 North Main Street Suite 220 Bishop, CA 93514	Michael.Tovar@Wildlife.ca.gov
CDFW	Graham Meese	CDFW- Inland Deserts Region 6 Habitat Conservation Program Supervisor 787 North Main Street Suite 220 Bishop, CA 93514	Graham.Meese@Wildlife.ca.gov
County Supervisor, District 1	Dan Totheroh	215 Arcturus Circle Bishop, CA 93514	dtotheroh@inyocounty.us
County Supervisor, District 2	Jeff Griffiths	199 Edward Street Bishop, CA 93514	jgriffiths@inyocounty.us
County Supervisor, District 3	Rick Pucci	P.O. Box 128 Bishop, CA 93514	supervisor.pucci@gmail.com
Department of Safety of Dams	Andy Mangney, Field Branch Chief	2720 Gateway Oaks Drive, Suite 300 Sacramento, CA 95833	andy.mangney@water.ca.gov
Department of Safety of Dams	Bill Vogler, Senior Engineer	2720 Gateway Oaks Drive, Suite 300 Sacramento, CA 95833	william.vogler@water.ca.gov
Department of Safety of Dams	Shawn Jones, Assistant Division Chief	2720 Gateway Oaks Drive, Suite 300 Sacramento, CA 95833	shawn.jones@water.ca.gov
Federal Emergency Management Agency	Bob Fenton, Regional Administrator	1111 Broadway, Suite 1200 Oakland, CA 94607-4052	robert.fenton@fema.dhs.gov
Federal Energy Regulatory Commission	Chris Wang, Project Engineer		christopher.wang@ferc.gov
Federal Energy Regulatory Commission	Frank Blackett, SF Regional Engineer	100 1st St. San Francisco, CA, 94105	frank.blackett@ferc.gov
Federal Energy Regulatory Commission	Vinh Tran, SF Branch Engineer	100 1st St. San Francisco, CA, 94105	vinh.tran@ferc.gov
Federal Energy Regulatory Commission	Quinn Emmering		quinn.emmering@ferc.gov
Federal Energy Regulatory Commission	Frank Winchell	888 First Street, NE Washington, DC 20426	frank.winchell@ferc.gov

2023 Initial Study Report Meeting Summary
Attachment C – Distribution List

Stakeholder	Contact	Mailing Address	Email Address
Federal Energy Regulatory Commission	Evan Williams		Evan.Williams@ferc.gov
Federal Energy Regulatory Commission	Ousmane Sidibe		Ousmane.Sidibe@ferc.gov
Federal Energy Regulatory Commission	Everard Baker		Everard.Baker@ferc.gov
Imperial Irrigation District	Sergio Quiroz, Interim General Manager	P.O. Box 937 Imperial, CA 92251-0937	smquiroz@iid.com
Inyo County Fish Commission	Pat Gunsolley		pgunsolley@gmail.com
Inyo-Mono Regional Water Management Program	Holly Alpert, Program Director	1234 North Market Blvd. Sacramento, CA 95834	halpert@calruralwater.org
Inyo-Mono Regional Water Management Program	Rick Kattelman, Project Development Specialist		rkattelman@calruralwater.org
Los Angeles Department of Water & Power	Chad Lamacchia		chad.lamacchia@ladwp.com
Los Angeles Department of Water & Power	Paul Pau		paul.pau@ladwp.com
Los Angeles Department of Water & Power	Adam Perez		adam.perez@ladwp.com
Los Angeles Department of Water & Power	Saeed Jorat		Saeed.Jorat@ladwp.com
Los Angeles Department of Water & Power	Eric Tillemans	301 Mandich Lane Bishop, CA 93514	eric.tillemans@ladwp.com
Los Angeles Department of Water & Power	David M. Livingston	300 Mandich St, Bishop, CA 93514-2629	david.livingston@ladwp.com
Mono County	Bob Gardner, Supervisor	P.O. Box 564 June Lake, CA 93541	bgardner@mono.ca.gov
Mono County, County Administration	Bob Lawton, County Administrative Officer	74 N. School Street P.O. Box 696 Bridgeport, CA 93517	blawton@mono.ca.gov
Mono County, Fish and Wildlife Commission	Gaye Mueller, Chair		easternsierraartist@gmail.com

2023 Initial Study Report Meeting Summary
Attachment C – Distribution List

Stakeholder	Contact	Mailing Address	Email Address
Mono County, Fish and Wildlife Commission	Jim King, Vice Chair		jkrcr@gmail.com
Mono County, Planning Commission	Wendy Sugimura	P.O. Box 347 Mammoth Lakes, CA 93546	wsugimura@mono.ca.gov
Mono County, Public Works Department	Tony Dublino, Public Works Director	74 N. School Street P.O. Box 457 Bridgeport, CA 93517	tdublino@mono.ca.gov
Mono County, Sheriff's Department	Ingrid Braun, Sheriff	49 Bryant Street Bridgeport, CA 93517	ibraun@monosheriff.org
Mono County, Sheriff's Department	Phil West, Undersheriff	49 Bryant Street Bridgeport, CA 93517	pwest@monosheriff.org
National Park Service	Linda Walker, Acting Regional Director	333 Bush Street San Francisco, CA 94104	Linda_Walker@nps.gov
National Park Service	Shawn Benge, Deputy Director	1849 C Street NW Washington, DC 20240	shawn_benge@nps.gov
National Park Service	Stephen Bowes	333 Bush Street San Francisco, CA 94104	stephen_bowes@nps.gov
National Park Service	Barbara Rice		barbara_rice@nps.gov
NOAA National Marine Fisheries Service	Nancy Foster	439 West York Street Norfolk, VA 23510-1145	NOAA.Ship.Nancy.Foster@noaa.gov
Regional Water Quality Control Board, Lahontan Region	Ed Hancock	2501 Lake Tahoe Blvd South Lake Tahoe, CA 96150	ed.hancock@waterboards.ca.gov
Regional Water Quality Control Board, Lahontan Region	Jennifer Watts	2501 Lake Tahoe Blvd South Lake Tahoe, CA 96150	jennifer.watts@waterboards.ca.gov
Resources Agency of California		Room 1311 1416 9th Street Sacramento, CA 95814-5511	secretary@resources.ca.gov
Tuolumne County Planning Division	Brian Bell	48 Yaney Avenue Sonora, CA 95370	bbell@co.tuolumne.ca.us
US Army Corps of Engineers	Director	1849 C Street NW Room 3238 Washington, DC 20240-0001	hq-publicaffairs@usace.army.mil
US Army Corps of Engineers, Los Angeles District	Public Affairs	915 Wilshire Blvd, Suite 930 Loca Angeles, CA 90017	publicaffairs.spl@usace.army.mil
US Army Corps of Engineers, Sacramento District	William Ness	1325 J Street Sacramento, CA 95814-2928	william.w.ness@usace.army.mil

2023 Initial Study Report Meeting Summary
Attachment C – Distribution List

Stakeholder	Contact	Mailing Address	Email Address
US Army Corps of Engineers, San Francisco District	LTC John K. Baker, District Commander	1455 Market Street, #1760 San Francisco, CA 94103	cespn-regulatory-info@usace.army.mil
US Fish and Wildlife Service	Kaylan Hager		Kaylan_Hager@fws.gov
US Fish and Wildlife Service - Reno Fish and Wildlife Office	Chad Mellison	1340 Financial Blvd, Ste 234 Reno, NV 89502-7147	RFWEmail@fws.gov
US Fish and Wildlife Service	Anne Mankowski		anne_mankowski@fws.gov
US Fish and Wildlife Service	Marcy Haworth		marcy_haworth@fws.gov
US Forest Service	Randy Moore, Chief		rmoore@fs.fed.us
US Forest Service	Eric Rios-Bertado		Eric.Rios-Bretado@usda.gov
US Forest Service, Inyo National Forest, Mono Lake Ranger District	Adam Barnett, Public Services Staff Officer	351 Pacu Ln Suite 200 Bishop, CA 93514	adam.barnett@usda.gov
US Forest Service, Region 5	Tristan Leong, Hydroelectric Coordinator, RHAT	1323 Club Drive Vallejo, CA 94592	tleong@fs.fed.us
US Forest Service, Region 5	Dawn Alvarez, RHAT	1323 Club Drive Vallejo, CA 94592	dalvarez@fs.fed.us
US Forest Service, Region 5	Jacqueline Beidl, Archaeologist	351 Pacu Ln Suite 200 Bishop, CA 93514	Jacqueline.beidl@usda.gov
US Forest Service, Region 5	Wilfred Nabahe, Tribal Relations Program Manager	351 Pacu Ln Suite 200 Bishop, CA 93514	Wilfred.Nabahe@usda.gov
US Forest Service, Region 5	Ashley Blythe Haverstock, Archaeologist	351 Pacu Ln Suite 200 Bishop, CA 93514	ashley.blythehaverstock@usda.gov
US Forest Service, Region 5	Todd Ellsworth, Water Program	351 Pacu Ln Suite 200 Bishop, CA 93514	todd.ellsworth@usda.gov
US Forest Service, Region 5	Nora Gamino, Engineering and Minerals	351 Pacu Ln Suite 200 Bishop, CA 93514	nora.gamino@usda.gov
US Forest Service, Region 5	Dan Yarborough, Geospatial Program Mgt	351 Pacu Ln Suite 200 Bishop, CA 93514	daniel.yarborough@usda.gov
US Forest Service, Region 5	Jameisha Washington, Recreation Officer		Jameisha.washington@usda.gov
US Forest Service, Region 5	Tristan Leong		tristan.leong@usda.gov

2023 Initial Study Report Meeting Summary
Attachment C – Distribution List

Stakeholder	Contact	Mailing Address	Email Address
US Forest Service, Region 5	Nathan Sill, Biologist		nathan.sill@usda.gov
US Forest Service, Region 5	Thomas Torres, Supervisor		thomas.torres@usda.gov
US Forest Service, Region 5	Sheila Irons, Forest Lands Specialist	P.O. Box 148 Mammoth Lakes, CA 93546	sheila.irons@usda.gov
US Forest Service, Region 5	Stephanie Heller, Restoration Hydrologist		stephanie.heller@usda.gov
US Forest Service, Region 5	Michael Wiese	507 E Line St D Bishop, Ca 93514	michael.wiese@usda.gov
US Forest Service, Region 5	Richard McNeill, District Ranger		richard.mcneill@usda.gov
US Geological Survey	Eric Reichard, Acting Regional Director	345 Middlefield Road Menlo Park, CA 94025	egreich@usgs.gov
Yosemite National Park	Superintendent	P.O. Box 577 Yosemite National Park, CA 95389	cicely_muldoon@nps.gov
Native American Tribes and Tribal Groups			
American Indian Council of Mariposa County (S. Sierra Miwuk National)	Sandra Chapman, Chairwoman	P.O. Box 186 Mariposa, CA 95338	ssmiwuknation@gmail.com ; sandra47roy@gmail.com
American Indian Council of Mariposa County (S. Sierra Miwuk National)	Wylon Coats, Vice Chairperson	P.O. Box 186 Mariposa, CA 95338	Vicechair@southernsierramiwuknation.org
American Indian Council of Mariposa County (S. Sierra Miwuk National)	Jazzmyn Gegere (Brochini) Cultural Resource Preservation Department Manager and Tribal Monitor Coordinator		preservation@southernsierramiwuknation.org
Antelope Valley Indian Community, Coleville Paiute Tribe	Chairperson or Tribal Administrator	PO Box 119 Coleville, CA 96107	
Big Pine Paiute Tribe of Owens Valley	Cheryl Levine	P.O. Box 700 Big Pine, CA 93513	c.levine@gibpinepaiute.org
Big Pine Paiute Tribe of Owens Valley	James Rambeau, Chairperson	P.O. Box 700 Big Pine, CA 93513	j.rambeau@bigpinepaiute.org
Big Pine Paiute Tribe of Owens Valley	Danielle Gutierrez, THPO	P.O. Box 700 Big Pine, CA 93513	d.gutierrez@bigpinepaiute.org
Big Pine Paiute Tribe of Owens Valley	L'eaux Stewart, Chairperson		l.stewart@bigpinepaiute.org

2023 Initial Study Report Meeting Summary
Attachment C – Distribution List

Stakeholder	Contact	Mailing Address	Email Address
Big Pine Paiute Tribe of Owens Valley	Danelle Gutierrez, Tribal Historic Preservation Officer		d.gutierrez@bigpinepaiute.org
Big Pine Paiute Tribe of Owens Valley	Sally Manning, Environmental Director		s.manning@bigpinepaiute.org
Bishop Paiute Tribe	Steven Orihuela	50 Tu Su Lane Bishop, CA 93514	steven.orihuela@bishoppaiute.org
Bishop Paiute Tribe	Tilford Denver, Tribal Chair	50 Tu Su Lane Bishop, CA 93514	tilford.denver@bishoppaiute.org
Bishop Paiute Tribe	Brian Poncho, THPO	50 Tu Su Lane Bishop, CA 93514	brian.poncho@bishoppaiute.org
Bishop Paiute Tribe	Meryl Picard, Chairperson		meryl.picard@bishoppaiute.org
Bishop Paiute Tribe	Darren Delgado, Tribal Historic Preservation Officer		darren.delgado@bishoppaiute.org
Bishop Paiute Tribe	Raymond Andrews		kutzanuumu@yahoo.com
Bridgeport Indian Colony	Herbert Glazier, Chairperson		chair@bridgeportindiancolony.com
Bridgeport Indian Colony	Debbie Lundy-Painter, Culture Coordinator		culture@bridgeportindiancolony.com
Bridgeport Paiute Indian Colony	Tribal Administrator	P.O. Box 37 Bridgeport, CA 93517	admin@bridgeportindiancolony.com
Bridgeport Paiute Indian Colony	John Glazier, Chairperson	P.O. Box 37 Bridgeport, CA 93517	chair@bridgeportindiancolony.com
Death Valley Timbisha Shoshone Tribe	Margaret Cortez, Chairperson	621 W Line St., Suite 109 Bishop, CA 93514 Bishop, CA 93515	one_mug@yahoo.com
Death Valley Timbisha Shoshone Tribe	Thomas Romero, Environmental Department	621 W Line St., Suite 109 Bishop, CA 93514 Bishop, CA 93515	environmental@timbisha.com
Death Valley Timbisha Shoshone Tribe	Mandi Campbell, THPO	621 W Line St., Suite 109 Bishop, CA 93514 Bishop, CA 93515	THPO@timbisha.com
Death Valley Timbisha Shoshone Tribe	Sookaaki (Charlie) Charley, Tribal Administrator/Acting THPO	621 W Line St., Suite 109 Bishop, CA 93514 Bishop, CA 93515	administrator@timbisha.com
Fort Independence Indian Community of Paiute Indians	Carl Dahlberg, Chairperson	P.O. Box 67 Independence, CA 93526	businesscommittee@fortindependence.com

2023 Initial Study Report Meeting Summary
Attachment C – Distribution List

Stakeholder	Contact	Mailing Address	Email Address
Fort Independence Indian Community of Paiute Indians	Sean Scruggs, THPO	P.O. Box 67 Independence, CA 93526	thpo@fortindependence.com ; falconkeeper22@gmail.com
Lone Pine Paiute-Shoshone Tribe	Katherine Bancroft, THPO	P.O. Box 40 Lone Pine, CA 93545	patsiata@yahoo.com
Lone Pine Paiute-Shoshone Tribe	Mary Weuster, Chairperson	P.O. Box 747 Lone Pine, CA 93545	chair@lpps.org
Mono Lake Kutzadikaa Tribe	Jocelyn Sheltraw, President of Mono Lake Kudadika'a Indian Community Cultural Preservation Association		jsheltraw@monolakeTribe.us
Mono Lake Kutzadikaa Tribe	Dean Tonenna, Vice President of Mono Lake Kudadika'a Indian Community Cultural Preservation Association		dtonenna@gmail.com
Mono Lake Kutzadikaa Indian Community Cultural Preservation Association	Raymond Andrews, President	P.O. Box 591 Bishop, CA 93515	kutzanuumu@yahoo.com
Mono Lake Kutzadikaa Tribe	Alan Blaver, Member	1613 Minorca Drive Costa Mesa, CA 92626	paiute11@aol.com
Mono Lake Kutzadikaa Tribe	Charlotte Lange, Chairperson	P.O. Box 117 Big Pine, CA 93513	char54lange@gmail.com
Mono Lake Kutzadikaa Tribe	Angela Eddy	884 Harry Street Big Pine, CA 93513	mono1paiute@gmail.com
North Fork Mono Tribe	Ron Goode, Chairman	13396 Tollhouse Road Clovis, CA 93619	rwgoode911@hotmail.com
North Fork Rancheria of Mono Indians	Fred Beihn, Chairperson		fbeihn@nfr-nsn.gov
North Fork Rancheria of Mono Indians	Christina McDonald, Vice Chairperson		cmcdonald@northforkrancheria-nsn.gov
North Fork Rancheria of Mono Indians of California	Christina McDonald, Environmental Director	P.O. Box 869 North Fork, CA 93643	cmcdonald@northforkrancheria-nsn.gov
North Fork Rancheria of Mono Indians of California	Elaine Fink, Tribal Chair	P.O. Box 869 North Fork, CA 93643	efink@nfr-nsn.gov

2023 Initial Study Report Meeting Summary
Attachment C – Distribution List

Stakeholder	Contact	Mailing Address	Email Address
Timbisha Shoshone Tribe	George Gholson, Tribal Chairman	621 West Line St., Suite 109 Bishop, CA 93515	george@timbisha.com
Timbisha Shoshone Tribe	Mandi Campbell, Tribal Historic Preservation Officer		thpo@timbisha.com
Tuolumne Band of Me-Wuk Indians	Andrea Reich, Chairperson	P.O. Box 669 Tuolumne, CA 95379	andrea@mewuk.com
Tuolumne Band of Me-Wuk Indians	Jon Otterson, Tribal Administrator	P.O. Box 669 Tuolumne, CA 95379	jon@mewuk.com
Tuolumne Band of Me-Wuk Indians	Reba Fuller, Government Affairs Specialist	P.O. Box 669 Tuolumne, CA 95379	rfuller@mewuk.com
Utu Utu Gwaitu Paiute Tribe Benton Paiute Reservation	Shane Saulque, Tribal Chairperson (INT) and Vice Chair	25669 Highway 6 PMBI Benton, CA 93512	shanesaulque@hotmail.com , sherisaulque4069@gmail.com
Utu Utu Gwaitu Paiute Tribe Benton Paiute Reservation	Dennis G. Chappabitty, Attorney at Law	25669 Highway 6 PMBI Benton, CA 93512	dennis@chaplaw.us
Walker River Paiute Tribe	Amber Torres, Chairperson	P.O. Box 220 Schurz, NV 89427	chairman@wrpt.org
Walker River Paiute Tribe	Olen McCloud, Chairman		omcccloud@wrpt.org
Walker River Paiute Tribe	Linzey Scott, Tribal Historic Preservation Officer		Lscott@wrpt.org
Yosemite-Mono Lake Paiute Indian Community	Lucy Parker, Representative		lucy_basket4@yahoo.com
Yosemite-Mono Lake Paiute Indian Community	Melvin Brewster, Representative		nativearchdoc@yahoo.com
Yosemite-Mono Lake Paiute Indian Community	David Andrews, Representative	P.O. Box 163523 Sacramento, CA 95816	nayanake@comcast.net
NGOs and Other Interested Parties			
Access Fund	Katie Goodwin	54880 Highway 395 Lee Vining, CA 93541	katie@accessfund.org
American Rivers	Colleen McNally-Murphy		cmcnally-murphy@americanrivers.org
American Rivers	Meghan Quinn	1813 Minniconjou Drive; South Lake Tahoe, California 96150	mquinn@americanrivers.org

2023 Initial Study Report Meeting Summary
Attachment C – Distribution List

Stakeholder	Contact	Mailing Address	Email Address
American Whitewater	Theresa Simsiman, Regional Coordinator		Theresa@americanwhitewater.org
Braveheart		P.O. Box 1625 Bishop, CA 93515	
California HydroPower Reform Coalition	Kelly Catlett, Associate Western States Director	2340 Brisbane Street West Sacramento, CA 95691	kelly@hydroreform.org
California Sportfishing Protection Alliance	Chris Shutes, FERC Projects Director	1608 Francisco Street Berkeley, CA 94703	blancapaloma@msn.com
California Trout	Curtis Knight, General Contact	P.O. Box 3442 Mammoth Lakes, CA 93546	Cknight@caltrout.org
California Trout	Marrina Nation		mnation@caltrout.org
California Trout	Sandra Jacobson, Sierra Headwaters Projects		Sjacobson@caltrout.org
Cardinal Village Resort		321 Cardinal Road Bishop, CA 93514	info@cardinalvillageresort.com
Double Eagle Resort	Ralph Lockhart, Owner	P.O. Box 731 B-736 June Lake, CA 93529	rlockhart@doubleeagle.com
East Shore Silver Lake Improvement Association (ESSLIA)	Ann Marie Mahoney	8 Cresta Del Sol San Clemente, CA	annmarie.mahoney@yahoo.com ; annmarie.mahoney@icloud.com
East Shore Silver Lake Improvement Association (ESSLIA)	Daniel Mazmanian		mazmania@usc.edu
East Shore Silver Lake Improvement Association (ESSLIA)	Don Goffinet, Treasurer	801 Allardice Way Stanford, CA 94305	goff@stanford.edu
East Shore Silver Lake Improvement Association (ESSLIA)	Jil Stark, Executive Vice President	890 East Harrison Avenue Pomona, CA 91767-2003	stark@fairplex.com
East Shore Silver Lake Improvement Association (ESSLIA)	Jim Ireton	1803 La Cima San Clemente, CA 92672	jimireton@cox.net
East Shore Silver Lake Improvement Association (ESSLIA)	Jim Mahoney	8 Cresta Del Sol San Clemente, CA	jrmfinfree@aol.com
East Shore Silver Lake Improvement Association (ESSLIA)	Linda Coffin		linda@traveloe.com
East Shore Silver Lake Improvement Association (ESSLIA)	Mark Shoemaker, President	32151 River Island Drive Springville, CA 93265	shoemaker.mark@ymail.com

2023 Initial Study Report Meeting Summary
Attachment C – Distribution List

Stakeholder	Contact	Mailing Address	Email Address
East Shore Silver Lake Improvement Association (ESSLIA)	Roger Getts		roger.getts@pattondist.com
East Shore Silver Lake Improvement Association (ESSLIA)	Steve Handy		shandyman58@gmail.com
East Shore Silver Lake Improvement Association (ESSLIA)			mshoemaker@1stallied.com
Eastern Sierra Audubon Society	Hillary Behr, President	P.O. Box 624 Bishop, CA 93515	president@esaudubon.org
Eastern Sierra Packers Association; Frontier Pack Train (Summer)		P.O. Box 656 June Lake, CA 93529	frontierpacktrain@gmail.com
Eastern Sierra Packers Association; Frontier Pack Train (Winter)		2095 Van Loon Lane Bishop, CA 93514	frontierpacktrain@gmail.com
Friends of Mono Lake Reserve		P.O. Box 278 Bridgeport, CA 93517	FOMLR@bodiefoundation.org
Friends of the Inyo	Allison Weber		allison@friendsoftheinyo.org
Friends of the Inyo	Ellen Wehr		eltrescott@hotmail.com
Friends of the Inyo	Jora Fogg		jora@friendsoftheinyo.org
Friends of the Inyo	Kate Kelly		kate@kgconsulting.net
Friends of the Inyo	Wendy Schneider	819 North Barlow Bishop, CA 93514	wendy@friendsoftheinyo.org
Friends of the River	Executive Director	1418 20th Street, Suite 100 Sacramento, CA 95811	eric@friendsoftheriver.org
Friends of the River	Ron Stork		Rstork@friendsoftheriver.org
Frontier Pack Train	Justin Dohnel		frontierpacktrain@gmail.com
Grant Lake Reservoir Marina	Doug Smith	P.O. Box 21 June Lake, CA 93529	Dsmith@rossignol.com
Grant Lake Resort	Tony Hallum	1 Grant Lake Resort P.O. Box 627 June Lake, CA 93529	management@grantlakeresort.com
Hydropower Reform	Colleen McNally-Murphy, Associate National Director	1101 14th Street NW, Suite 1400 Washington DC 20005	colleen@hydroreform.org
Inyo-Mono Resource Conservation District	Hal Curti, President	270 North See Vee Lane #6 Bishop, CA 93514-9624	hal@curtiranch.com
June Lake Loop Chamber of Commerce		P.O. Box 2 June Lake, CA 93529	

2023 Initial Study Report Meeting Summary
Attachment C – Distribution List

Stakeholder	Contact	Mailing Address	Email Address
June Lake Loop Historical Society		P.O. Box 104 June Lake, CA 93529	
June Lake Motel	Lisa Oepkes	2716 California 158 June Lake, CA	Reservations@JuneLakeMotel.com
Lake Front Cabins	L Nealand	32 Brenner Street June Lake, CA 93529	info@summit-vacations.com
Lee Vining Chamber of Commerce		P.O. Box 131 Lee Vining, CA 93541	INFO@MONOLAKE.ORG
Mammoth Lakes Chamber of Commerce	Ken Brengle, Executive Director	P.O. Box 3268 2520 Main Street Mammoth Lakes, CA 93546	info@mammothlakeschamber.org
Michael K. Lerch & Associates	Mike Lerch	319 Clanton Way Woodland, CA 95695	mkerch.mkla@gmail.com
Mono Basin Historical Society			curator@monobasinhistory.org
Mono Basin Scenic Area Visitor Center		1 Visitor Center Drive Lee Vining, CA 93541	
Mono Lake Committee	Bartshe Miller, Eastern Sierra Policy Director	P.O. Box 29 Lee Vining, CA 93541	bartshe@monolake.org
Mono Lake Committee	Geoff McQuilkin, Executive Director		geoff@monolake.org
Mono Lake Committee	Greg Reis, Information and Restoration Specialist	P.O. Box 161 San Geronimo, CA 94963	greg@monolake.org
Northern California Power Agency		651 Commerce Drive Roseville, CA 95678-6411	
Owens Valley Committee	Mary Roper	P.O. Box 77 Bishop, CA 93515	maryroper51@gmail.com
People for Mono Basin Preservation	Kathleen Maloney Bellomo	P.O. Box 217 Lee Vining, CA 93541	hydroesq@schat.net
Planning and Conservation League	Howard Penn, Executive Director	1107 Ninth St., Suite 360 Sacramento, CA 95814	pclmail@pcl.org
Rainbow Pack Outfitters	Greg and Ruby Allen and Family	P.O. Box 1791 Bishop, CA 93515	rainbowpackers@aol.com
Reverse Creek Lodge	David Naader	52 S. Texas Street June Lake, CA 93529	reverse@qnet.com
Saddlebag Lake Resort / Tioga Pass Resort LLC		P.O. Box 303 Lee Vining, CA 93541	saddlebaglake@gmail.com
Sierra Business Council	Steve Frisch, President	10183 Truckee Airport Road #202 Truckee, CA 96161	sfrisch@sierrabusiness.org

2023 Initial Study Report Meeting Summary
Attachment C – Distribution List

Stakeholder	Contact	Mailing Address	Email Address
Sierra Club, Toiyabe Chapter		2101 Webster St., Suite 1300 Oakland, CA 94612	chair@toiyabe.sierraclub.org
Sierra Club, Toiyabe Chapter, Range of Light Group	Mark Bagley, Owens River Watershed Conservation Chair	53 S. Texas Street June Lake, CA 93529	m.bagley@verizon.net markbagley02@gmail.com
Sierra Nevada Alliance	Jenny Hatch, Executive Director	P.O. Box 7989 South Lake Tahoe, CA 96158	jenny@sierranevadaalliance.org
Sierra Nevada Big Horn Sheep Foundation	John Wehausen, Executive Director	P.O. Box 1183 Bishop, CA 93515	
Silver Lake Resort	Andrew Jones	P.O. Box 116 6857 CA-158 June Lake, CA 93529	silverlakeresortfamily@hotmail.com
Silver Lake Resort	Gary Jones	P.O. Box 116 6857 CA-158 June Lake, CA 93529	silverlakeresortfamily@hotmail.com
Silver Lake Resort	Richard Yokovanderpool	P.O. Box 116 6857 CA-158 June Lake, CA 93529	silverlakeresortfamily@hotmail.com
Southern Mono Historical Society		5489 Sherwin Creek Road Mammoth Lakes, CA 93546	events@mammothmuseum.org
TEAM Environmental	Naomi Jensen	459 W. Line Street, Suite A Bishop, CA 93514	naomi@teambishop.com
The Nature Conservancy, California Field Office		201 Mission Street 4th Floor San Francisco, CA 94105	california@tnc.org
Tioga Lodge at Mono Lake		P.O. Box 580 Lee Vining, CA 93541	tiogalodge@gmail.com
Tioga Pass Resort		1887 Highway 120 Lee Vining, CA 93541	tiogapassresortllc@gmail.com
Trout Unlimited	Mary Ann King, California Water Project Director	5950 Doyle Street, Suite 2 Emeryville, CA 94608	mking@tu.org
Trout Unlimited	Tiffanee Hutton	15695 Donner Pass Rd, Suite 100 Truckee, CA 96161	tiffanee.hutton@tu.org
Trout Unlimited, Eastern Sierra Chapter	Jessica Strickland, California Field Coordinator	P.O. Box 7399 Mammoth Lakes, CA 93546	jstrickland@tu.org
Wildlife Conservation Board	Executive Director	1416 9th Street Sacramento, CA 95814-5511	John.Donnely@wildlife.ca.gov

2023 Initial Study Report Meeting Summary
Attachment C – Distribution List

Stakeholder	Contact	Mailing Address	Email Address
Public and Other			
Public	Bartshe Miller	Mono County	bzashe@gmail.com
Public	Andrew Zdon		azdon@rouxinc.com
Public	Eric Badger	122 Nevada Street June Lake, CA 93529	badger_eric@yahoo.com
Public	Carolyn and Ed Escoto		beach2june@yahoo.com
Public	Karen Gardner	56 Nevada Street June Lake, CA 93529	bkakn1@gmail.com
Public	Dan McConnell		danmccconnell55@gmail.com
Public	David Rosky	88 Mt. View Lane June Lake, CA 93529	dave.rosky@gmail.com
Public	Judy Erb		dnjerb@gmail.com
Public	Dorothy Burdette	891 Mono Drive June Lake, CA 93529	dodoburdette@gmail.com
Public	Ed Escoto		edbuilt@gmail.com
Public	Bill Egan		gardenofegan@suddenlink.net
Public, Attorney	Greg James, Attorney	1839 Shoshone Drive Bishop, CA 93514	gregjames@earthlink.net
Public	Ian Festers		ian@mechdc.com
Public	Igot Vorobyoff	35 Silver Meadow Lane June Lake, CA 93529	igorthe5th@gmail.com
Public	Joyce Kaufman, Bob Marks	660 Piute Drive June Lake, CA 93529	jkaufman@whittier.edu
Public	Joe Crawford	94 Bay Street June Lake, CA 93529	joecrawford815@gmail.com
Public	Jora Fogg		jora.rehm.lorber@gmail.com
Public	Kevin Larsen	P.O. Box 426 100 Bruce St June Lake, CA 93529	kevintlarsen@gmail.com
Public	Duncan King	P.O. Box 235 200 Peeler Lake Drive Lee Vining, CA 93541	nosmog@yahoo.com
Public	Philip Anaya	2348 Longview Drive Bishop, CA 93514	Philipana@aol.com
Public	Dennis Boeher	Box 626	plm2pne@gmail.com
Public	Peter Strickells	210 Zach Ranch Road Bishop, CA 93514	pstickells@gmail.com
Public	Robert Marks	660 Piute Dr. PO Box 671 June Lake, CA 93529	rmarks1949@iCloud.com
Public	Robert Nailon	2454 Grimes Cemetary Rd Lufkin, TX 75901	Robert_Nailon@aol.com

2023 Initial Study Report Meeting Summary
Attachment C – Distribution List

Stakeholder	Contact	Mailing Address	Email Address
Public	Sarah Crawford	94 Bay Drive June Lake, CA 93529	sarahholston1216@gmail.com
Public	Sue Burak	1335 Rocking W Drive PMB 130 Bishop, CA 93514	sb@snowhydrology.com
Public	Harvey Lewis	P.O. Box 296 June Lake, CA 93529	
Public	Jeff Yanez		
Public	Paul McFarland		
Public	Phil Sutphin		
Public	Rachel Maxwell		
Public	Terry Plum		
Southern California Edison Company			
Southern California Edison Company	Audry Williams		audry.williams@sce.com
Southern California Edison Company	Brittany Arnold	P.O. Box 527 Avalon, CA 90704	brittany.arnold@sce.com
Southern California Edison Company	Calvin Rossi		calvin.rossi@sce.com
Troutman Pepper (outside counsel)	Charles Sensiba (Chuck)		charles.sensiba@troutman.com
Southern California Edison Company	Cornelio Artienda	1515 Walnut Grove Avenue Rosemead, CA 91770	Cornelio.Artienda@sce.com
Troutman Pepper (outside counsel)	Elizabeth McCormick		elizabeth.mccormick@troutman.com
Southern California Edison Company	FERC Case Administration	2244 Walnut Grove Avenue Rosemead, CA 91770	ferccaseadmin@sce.com
Southern California Edison Company	Jessica Rankin	2244 Walnut Grove Avenue Rosemead, CA 91770	jessica.rankin@sce.com
Southern California Edison Company	Kelly Henderson	2244 Walnut Grove Avenue Rosemead, CA 91770	kelly.henderson@sce.com
Southern California Edison Company	Lyle Laven		lyle.laven@sce.com
Southern California Edison Company	Martin Ostendorf	P.O. Box 100 Big Creek, CA 93605-0101	martin.ostendorf@sce.com
Southern California Edison Company	Mary Richardson	25 S Oak Knoll Avenue, Apt. 209 Pasadena, CA 91101	mary.m.richardson@sce.com
Southern California Edison Company	Mary Schickling	1 Pebbly Beach Road Avalon, CA 90704	mary.schickling@sce.com

2023 Initial Study Report Meeting Summary
Attachment C – Distribution List

Stakeholder	Contact	Mailing Address	Email Address
Southern California Edison Company	Matthew C Paruolo		matthew.paruolo@sce.com
Southern California Edison Company	Matthew Woodhall	1515 Walnut Grove Avenue Rosemead, CA 91770	Matthew.Woodhall@sce.com
Southern California Edison Company	Nicolas von Gersdorff	1515 Walnut Grove Avenue Rosemead, CA 91770	nicolas.von@sce.com
Southern California Edison Company	Patrick Le	1515 Walnut Grove Avenue Rosemead, CA 91770	patrick.le@sce.com
Southern California Edison Company	Seth Carr		seth.carr@sce.com
Southern California Edison Company	Wayne Allen	1515 Walnut Grove Avenue Rosemead, CA 91770	wayne.allen@sce.com